

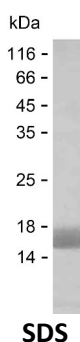
Product Name: Recombinant Human CLCA2 Protein
Catalog #: PEH3455



Summary

Name	CLCA2_HUMAN
Purity	Greater than 85% as determined by reducing SDS-PAGE
Endotoxin level	Please contact with the lab for this information
Tag	C-His
Accession #	Q9UQC9
Host	E.coli
Species	Human
Molecular Mass	11 kDa
Buffer	Phosphate buffered saline
Shipping	The product is shipped on dry ice/polar packs. Upon receipt, store it immediately at the temperature listed below.
Stability&Storage	Store at $\leq -70^{\circ}\text{C}$, stable for 6 months after receipt. Store at $\leq -70^{\circ}\text{C}$, stable for 3 months under sterile conditions after opening. Please minimize freeze-thaw cycles.
Sequence	DLEAVKVEEE LTLWTAPGE DFDQGQATSY EIRMSKSLQN IQDDFNNAIL VNTSKRNPQQ AGIREIFTFS PQISTNGPEH

image



Background

Alternative Names	Calcium-activated chloride channel regulator 2 (EC 3.4.-.-) (Calcium-activated chloride channel family member 2) (hCLCA2) (Calcium-activated chloride channel protein 3) (CaCC-3) (hCaCC-3) [Cleaved into: Calcium-activated chloride channel regulator 2, 109 kDa form; Calcium-activated chloride channel regulator 2, 35 kDa form]
--------------------------	---

Note

Product Name: Recombinant Human CLCA2 Protein
Catalog #: PEH3455



For Research Use Only , Not for Diagnostic Use