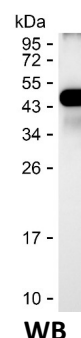
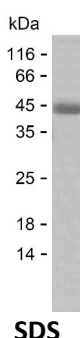


Summary

Name	MD1L1_HUMAN
Purity	Greater than 85% as determined by reducing SDS-PAGE
Endotoxin level	Please contact with the lab for this information
Tag	C-His
Accession #	Q9Y6D9
Host	E.coli
Species	Human
Molecular Mass	42 kDa
Buffer	Lyophilized from Phosphate buffered saline
Shipping	The product is shipped on dry ice/polar packs. Upon receipt, store it immediately at the temperature listed below.
Stability&Storage	Store at $\leq -70^{\circ}\text{C}$, stable for 12 months after receipt. Store at $\leq -70^{\circ}\text{C}$, stable for 3 months under sterile conditions after opening. Please minimize freeze-thaw cycles.
Sequence	LSTLRSLNNF ISQRVEGGSG LDISTSAPGS LQMYYQQSMQ LEERAEQIRS KSHLIQVERE KMQMELSHKR ARVELERAAS TSARNYEREV DRNQELLTRI RQLQEREAGA EEKMQEQLER NRQCQQLDA ASKRLREKED SLAQAGETIN ALKGRISELQ WSVMDQEMRV KRLESEKQEL QEQLDLQHKK CQEANQKIQE LQASQEARAD HEQQIKDLEQ KLSLQEQDAA IVKNMKSELV RLPRLERELK QLREESAHLR EMRETNGLLQ EELEGLQRKL GRQEKMQETL VGLELENERL LAKLQSWERL DQTMGLSIRT PEDLSRFVVE LQQRELALKD

image



Background

Alternative Names	Mitotic spindle assembly checkpoint protein MAD1 (Mitotic arrest deficient 1-like protein 1) (MAD1-like protein 1) (Mitotic checkpoint MAD1 protein)
--------------------------	--

Product Name: Recombinant Human MAD1L1 Protein
Catalog #: PEH3454



homolog) (HsMAD1) (hMAD1) (Tax-binding protein 181)

Note

For Research Use Only , Not for Diagnostic Use