

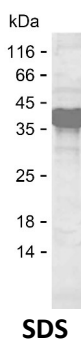
Product Name: Recombinant Human MCM6 Protein
Catalog #: PEH3447



Summary

| | |
|------------------------------|--|
| Name | MCM6_HUMAN |
| Purity | Greater than 85% as determined by reducing SDS-PAGE |
| Endotoxin level | Please contact with the lab for this information |
| Tag | C-His |
| Accession # | Q14566 |
| Host | E.coli |
| Species | Human |
| Molecular Mass | 28 kDa |
| Buffer | Lyophilized from Phosphate buffered saline |
| Shipping | The product is shipped on dry ice/polar packs. Upon receipt, store it immediately at the temperature listed below. |
| Stability&Storage | Store at $\leq -70^{\circ}\text{C}$, stable for 12 months after receipt. Store at $\leq -70^{\circ}\text{C}$, stable for 3 months under sterile conditions after opening. Please minimize freeze-thaw cycles. |
| Sequence | EDFIVEQYKH LRQRDGSVGT KSSWRITVRQ LESMIRLSEA MARMHCCDEV QPKHVKEAFR LLNKSIRVE TPDVNLQEE EIQMEVDEGA GGINGHADSP APVNGINGYN EDINQESAPK ASLRLGFSEY CRISNLIVLH LRKVEEEDE SALKRSELVN WYLKEIESEI DSEEELINKK RIIKVIHRL THYDHVLIEL TQAGLKGSTE GSESYEEDPY LVVNPNYLLE |

image



Background

Alternative Names DNA replication licensing factor MCM6 (EC 3.6.4.12) (p105MCM)

Note

Product Name: Recombinant Human MCM6 Protein
Catalog #: PEH3447



For Research Use Only , Not for Diagnostic Use