

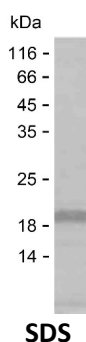
**Product Name: Recombinant Human CHL1 Protein**  
**Catalog #: PEH3420**



## Summary

|                              |  |
|------------------------------|--|
| <b>Name</b>                  | NCHL1_HUMAN  |
| <b>Purity</b>                | Greater than 85% as determined by reducing SDS-PAGE  |
| <b>Endotoxin level</b>       | Please contact with the lab for this information   |
| <b>Tag</b>                   | C-His  |
| <b>Accession #</b>           | O00533   |
| <b>Host</b>                  | E.coli   |
| <b>Species</b>               | Human  |
| <b>Molecular Mass</b>        | 11 kDa   |
| <b>Buffer</b>                | Phosphate buffered saline  |
| <b>Shipping</b>              | The product is shipped on dry ice/polar packs. Upon receipt, store it immediately at the temperature listed below.   |
| <b>Stability&amp;Storage</b> | Store at $\leq -70^{\circ}\text{C}$ , stable for 6 months after receipt. Store at $\leq -70^{\circ}\text{C}$ , stable for 3 months under sterile conditions after opening. Please minimize freeze-thaw cycles. |
| <b>Sequence</b>              | YSVKEKEDLH PDPEIQSVKD ETFGEYSDD EKPLKGLRS LNRDMQPTES<br>ADSLVEYGEG DHGLFSEDGS FIGAYAGSKE   |

## image



## Background

**Alternative Names** Neural cell adhesion molecule L1-like protein (Close homolog of L1) [Cleaved into: Processed neural cell adhesion molecule L1-like protein]

## Note

For Research Use Only , Not for Diagnostic Use