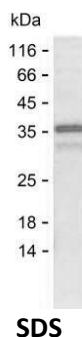


Summary

Name	K1C10_HUMAN
Purity	Greater than 85% as determined by reducing SDS-PAGE
Endotoxin level	Please contact with the lab for this information
Tag	C-His
Accession #	P13645
Host	E.coli
Species	Human
Molecular Mass	37 kDa
Buffer	Lyophilized from Phosphate buffered saline
Shipping	The product is shipped on dry ice/polar packs. Upon receipt, store it immediately at the temperature listed below.
Stability&Storage	Store at $\leq -70^{\circ}\text{C}$, stable for 12 months after receipt. Store at $\leq -70^{\circ}\text{C}$, stable for 3 months under sterile conditions after opening. Please minimize freeze-thaw cycles.
Sequence	QNLNDRLASV LDKVRALEES NYELEGKIKE WYEKHGNSHQ GEPRDYSKYY KTIDDLKNQI LNLTTDNANI LLQIDNARLA ADDFRLKYEN EVALRQSVEA DINGLRRVLD ELTLTKADLE MQIESLTEEL AYLKKNHEEE MKDLRNVSTG DVNVEMNAAP GVDLTQLLNN MRSQYEQLAE QNRKDAAEFW NEKSKELTTE IDNNIEQISS YKSEITELRR NVQALEIELQ SQLALKQSLE ASLAETEGRY CVQLSQIQAQ ISALEEQIQQ IRAETECQNT EYQQLLDIKI RLENEIQTYR SLLEGEQSSG GGGRGGGSFG GGYGGGSSGG GSSGGGHGGG HGGSSGGGYG GGSSGGGSSG GGYGGGSSSG GHGGSSSGGY GGGSSGGGGG GYGGGSSGGG SSSGGGYGGG SSSGGHKSSS SGVSGESSK

image



Background

Product Name: Recombinant Human KRT10 Protein
Catalog #: PEH3339



Alternative Names

Keratin, type I cytoskeletal 10 (Cytokeratin-10) (CK-10) (Keratin-10) (K10)

Note

For Research Use Only , Not for Diagnostic Use