

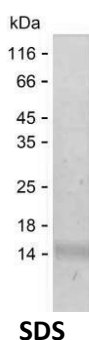
Product Name: Recombinant Human CCL2 Protein
Catalog #: PEH3334



Summary

Name	CCL2_HUMAN
Purity	Greater than 85% as determined by reducing SDS-PAGE
Endotoxin level	Please contact with the lab for this information
Tag	C-His
Accession #	P13500
Host	E.coli
Species	Human
Molecular Mass	10 kDa
Buffer	Phosphate buffered saline
Shipping	The product is shipped on dry ice/polar packs. Upon receipt, store it immediately at the temperature listed below.
Stability&Storage	Store at $\leq -70^{\circ}\text{C}$, stable for 6 months after receipt. Store at $\leq -70^{\circ}\text{C}$, stable for 3 months under sterile conditions after opening. Please minimize freeze-thaw cycles.
Sequence	QPDAINAPVT CCYNFTNRKI SVQRLASYRR ITSSKCPKEA VIFKTIVAKE ICADPKQKWV QDSMDHLDKQ TQTPKT

image



Background

Alternative Names	C-C motif chemokine 2 (HC11) (Monocyte chemoattractant protein 1) (Monocyte chemotactic and activating factor) (MCAF) (Monocyte chemotactic protein 1) (MCP-1) (Monocyte secretory protein JE) (Small-inducible cytokine A2)
--------------------------	--

Note

For Research Use Only , Not for Diagnostic Use

Product Name: Recombinant Human CCL2 Protein
Catalog #: PEH3334

