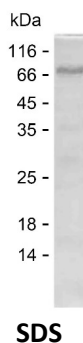


Summary

Name	MYH14_HUMAN
Purity	Greater than 85% as determined by reducing SDS-PAGE
Endotoxin level	Please contact with the lab for this information
Tag	C-His
Accession #	Q7Z406
Host	E.coli
Species	Human
Molecular Mass	68 kDa
Buffer	Phosphate buffered saline
Shipping	The product is shipped on dry ice/polar packs. Upon receipt, store it immediately at the temperature listed below.
Stability&Storage	Store at $\leq -70^{\circ}\text{C}$, stable for 6 months after receipt. Store at $\leq -70^{\circ}\text{C}$, stable for 3 months under sterile conditions after opening. Please minimize freeze-thaw cycles.
Sequence	EKKRLQQHIQ ELEAHLEAEE GARQKLQLEK VTTEAKMKKF EEDLLLLLEDQ NSKLSKERKL LEDRLAEFSS QAAEEEEKVK SLNKLRLKYE ATIADMEDRL RKEEKGRQEL EKLKRRLDGE SSELQEQMVE QQQRAEELRA QLGRKEEELQ AALARAEDEG GARAQLLKSL REAQAALAEA QEDLESERVA RTKAEKQRRD LGEELEALRG ELEDTLNSTN AQQELRSKRE QEVTELKCTL EEETRIHEAA VQELRQRHGQ ALGELAEQLE QARRGKGAWK KTRLALEAEV SELRAELSSL QTARQEGEQR RRRLELQLQE VQGRAGDGER ARAEAAEKLQ RAQAELENVS GALNEAESKT IRLSKELSST EAQLHDAQEL LQEETRAKLA LGSVRAMEA EAAGLREQLE EEAAARERAG RELQTAQAQL SEWRRRQEEE AGALEAGEEA RRRAAREAEA LTQRLAEKTE TVDRLERGRR RLQQELDDAT MDLEQQRQLV STLEKKQRKF DQLLAEEKAA VLRAVEERER AEAEGREREA RALSLETRAE EEQEAREELE RQNRALRAEL

image



Product Name: Recombinant Human MYH14 Protein
Catalog #: PEH3218



Background

Alternative Names

Myosin-14 (Myosin heavy chain 14) (Myosin heavy chain, non-muscle IIc)
(Non-muscle myosin heavy chain IIc) (NMHC II-C)

Note

For Research Use Only , Not for Diagnostic Use