

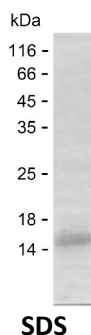
Product Name: Recombinant Human CSHL1 Protein
Catalog #: PEH3192



Summary

Name	CSHL_HUMAN
Purity	Greater than 85% as determined by reducing SDS-PAGE
Endotoxin level	Please contact with the lab for this information
Tag	C-His
Accession #	Q14406
Host	E.coli
Species	Human
Molecular Mass	11 kDa
Buffer	Phosphate buffered saline
Shipping	The product is shipped on dry ice/polar packs.Upon receipt, store it immediately at the temperature listed below.
Stability&Storage	Store at $\leq -70^{\circ}\text{C}$, stable for 6 months after receipt.Store at $\leq -70^{\circ}\text{C}$, stable for 3 months under sterile conditions after opening. Please minimize freeze-thaw cycles.
Sequence	TSSNMEETQQ KSNLELLHIS LLLIESRLEP VRFLRSTFTN NLVYDTSDDSD DYHLLKDLEE GIQMLMGRLE DGSHLTGQTL

image



Background

Alternative Names	Chorionic somatomammotropin hormone-like 1 (Chorionic somatomammotropin-like) (Lactogen-like)
--------------------------	---

Note

For Research Use Only , Not for Diagnostic Use