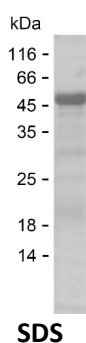


## Summary

<b>Name</b>	STIP1_HUMAN
<b>Purity</b>	Greater than 85% as determined by reducing SDS-PAGE
<b>Endotoxin level</b>	Please contact with the lab for this information
<b>Tag</b>	N-SUMO & N-His
<b>Accession #</b>	P31948
<b>Host</b>	E.coli
<b>Species</b>	Human
<b>Molecular Mass</b>	49 kDa
<b>Buffer</b>	Phosphate buffered saline
<b>Shipping</b>	The product is shipped on dry ice/polar packs. Upon receipt, store it immediately at the temperature listed below.
<b>Stability&amp;Storage</b>	Store at $\leq -70^{\circ}\text{C}$ , stable for 6 months after receipt. Store at $\leq -70^{\circ}\text{C}$ , stable for 3 months under sterile conditions after opening. Please minimize freeze-thaw cycles.
<b>Sequence</b>	AKRTYEEGLK HEANNPQLKE GLQNMEARLA ERKFMNPFNM PNLQKLESD PRTRTLLSDP TYRELIEQLR NKPSDLGTKL QDPRIMTTLS VLLGVDLGSM DEEEEIATPP PPPPKKETK PEPMEEDLPE NKKQALKEKE LGNDAYKKKD FDTALKHYDK AKELDPTNMT YITNQAAYVF EKG DYNKCRE LCEKAIEVGR ENREDYRQIA KAYARIGNSY FKEEKYKDAI HFYNKSLAEH RTPDVLKCCQ QAEKILKEQE RLAYINPDLA LEEKNKGNEC FQKGDYPQAM KHYTEAIKRN PKDAKLYSNR

## image



## Background

<b>Alternative Names</b>	Stress-induced-phosphoprotein 1 (STI1) (Hsc70/Hsp90-organizing protein) (Hop) (Renal carcinoma antigen NY-REN-11) (Transformation-sensitive
--------------------------	---

**Product Name: Recombinant Human STIP1 Protein**  
**Catalog #: PEH3007**



---

protein IEF SSP 3521)

**Note**

For Research Use Only , Not for Diagnostic Use