

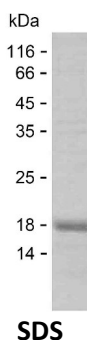
Product Name: Recombinant Human SERPINB1 Protein
Catalog #: PEH3002



Summary

| | |
|------------------------------|--|
| Name | ILEU_HUMAN |
| Purity | Greater than 85% as determined by reducing SDS-PAGE |
| Endotoxin level | Please contact with the lab for this information |
| Tag | C-His |
| Accession # | P30740 |
| Host | E.coli |
| Species | Human |
| Molecular Mass | 16 kDa |
| Buffer | Phosphate buffered saline |
| Shipping | The product is shipped on dry ice/polar packs. Upon receipt, store it immediately at the temperature listed below. |
| Stability&Storage | Store at $\leq -70^{\circ}\text{C}$, stable for 6 months after receipt. Store at $\leq -70^{\circ}\text{C}$, stable for 3 months under sterile conditions after opening. Please minimize freeze-thaw cycles. |
| Sequence | DLKCRVLELP YQGEELSMVI LLPDDIEDES TGLKKIEEQL TLEKLHEWTK PENLDFIEVN VSLPRFKLEE SYTLNSDLAR LGVQDLFNSS KADLSGMSG RDIFISKIVH KSFVEVNEEG TAAAAATAGI |

image



Background

Alternative Names Leukocyte elastase inhibitor (LEI) (Monocyte/neutrophil elastase inhibitor) (EI) (M/NEI) (Peptidase inhibitor 2) (PI-2) (Serpine B1)

Note

For Research Use Only , Not for Diagnostic Use