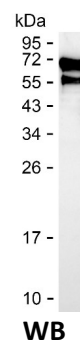
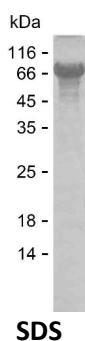


## Summary

<b>Name</b>	ITAL_HUMAN
<b>Purity</b>	Greater than 85% as determined by reducing SDS-PAGE
<b>Endotoxin level</b>	Please contact with the lab for this information
<b>Tag</b>	N-SUMO & C-His
<b>Accession #</b>	P20701
<b>Host</b>	E.coli
<b>Species</b>	Human
<b>Molecular Mass</b>	76 kDa
<b>Buffer</b>	Lyophilized from Phosphate buffered saline
<b>Shipping</b>	The product is shipped on dry ice/polar packs. Upon receipt, store it immediately at the temperature listed below.
<b>Stability&amp;Storage</b>	Store at $\leq -70^{\circ}\text{C}$ , stable for 12 months after receipt. Store at $\leq -70^{\circ}\text{C}$ , stable for 3 months under sterile conditions after opening. Please minimize freeze-thaw cycles.
<b>Sequence</b>	AGRHFGYRVL QVGNGVIVGA PEGNSTGSL YQCQSGTGHC LPVTLRGSNY TSKYLGMTLA TDPTDGSILA CDPGLSRTCD QNTYLSGLCY LFRQNLQGPM LQGRPGFQEC IKGNDLVFL FDGMSLQPD EFQKILDFMK DVMKKLSNTS YQFAAVQFST SYKTEFDFSD YVKRKDPDAL LKHVKHMLLL TNTFGAINYV ATEVFREELG ARPDATKVL IITDGEATDS GNIDAAKDII RYIIGIGKHF QTKESQETLH KFASKPASEF VKILDTFEKL KDLFTELQKK IYVIEGTSKQ DLTSFNMELS SSGISADLSR GHAVVGAVGA KDWAGGFDDL KADLQDDTFI GNEPLTPEVR AGYLGTVTW LPSRQKTSLL ASGAPRYQHM GRVLLFQEPQ GGGHWSQVQT IHGTQIGSYF GGELCGVDVD QDGETELLLI GAPLFYGEQR GGRVFIYQRR QLGFEVSEL QGDPGYPLGR FGEAITALTD INGDLVDVA VGAPLEEQGA VYIFNGRHGG LSPQPSQRIE GTQVLSGIQW FGRSIHGVKD LEGDGLADVA VGAESQMIVL

## image



**Product Name: Recombinant Human ITGAL Protein**  
**Catalog #: PEH2975**



---

## Background

### Alternative Names

Integrin alpha-L (CD11 antigen-like family member A) (Leukocyte adhesion glycoprotein LFA-1 alpha chain) (LFA-1A) (Leukocyte function-associated molecule 1 alpha chain) (CD antigen CD11a)

## Note

For Research Use Only , Not for Diagnostic Use