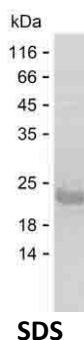


## Summary

<b>Name</b>	MUC1_HUMAN
<b>Purity</b>	Greater than 85% as determined by reducing SDS-PAGE
<b>Endotoxin level</b>	Please contact with the lab for this information
<b>Tag</b>	C-His
<b>Accession #</b>	P15941
<b>Host</b>	E.coli
<b>Species</b>	Human
<b>Molecular Mass</b>	13 kDa
<b>Buffer</b>	Lyophilized from Phosphate buffered saline
<b>Shipping</b>	The product is shipped on dry ice/polar packs. Upon receipt, store it immediately at the temperature listed below.
<b>Stability&amp;Storage</b>	Store at $\leq -70^{\circ}\text{C}$ , stable for 12 months after receipt. Store at $\leq -70^{\circ}\text{C}$ , stable for 3 months under sterile conditions after opening. Please minimize freeze-thaw cycles.
<b>Sequence</b>	PGGEKETSAT QRSSVPSSTE KNAVSM TSSV LSSHSPGSGS STTQGQDVTL APATEPASGS AATWGQDVTS VPVTRPALGS TTPPAHDVTS APDNKPAPGS TAPPAHGVTS APDTRPAPGS

## image



## Background

<b>Alternative Names</b>	Mucin-1 (MUC-1) (Breast carcinoma-associated antigen DF3) (Cancer antigen 15-3) (CA 15-3) (Carcinoma-associated mucin) (Episialin) (H23AG) (Krebs von den Lungen-6) (KL-6) (PEMT) (Peanut-reactive urinary mucin) (PUM) (Polymorphic epithelial mucin) (PEM) (Tumor-associated epithelial membrane antigen) (EMA) (Tumor-associated mucin) (CD antigen CD227) [Cleaved into: Mucin-1 subunit alpha (MUC1-NT) (MUC1-alpha); Mucin-1
--------------------------	--

**Product Name: Recombinant Human MUC1 Protein**  
**Catalog #: PEH2943**



---

subunit beta (MUC1-beta) (MUC1-CT)]

**Note**

For Research Use Only , Not for Diagnostic Use