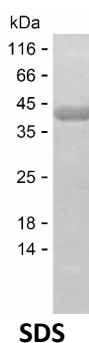


## Summary

<b>Name</b>	LAMC1_HUMAN
<b>Purity</b>	Greater than 85% as determined by reducing SDS-PAGE
<b>Endotoxin level</b>	Please contact with the lab for this information
<b>Tag</b>	C-His
<b>Accession #</b>	P11047
<b>Host</b>	E.coli
<b>Species</b>	Human
<b>Molecular Mass</b>	40 kDa
<b>Buffer</b>	Lyophilized from Phosphate buffered saline
<b>Shipping</b>	The product is shipped on dry ice/polar packs. Upon receipt, store it immediately at the temperature listed below.
<b>Stability&amp;Storage</b>	Store at $\leq -70^{\circ}\text{C}$ , stable for 12 months after receipt. Store at $\leq -70^{\circ}\text{C}$ , stable for 3 months under sterile conditions after opening. Please minimize freeze-thaw cycles.
<b>Sequence</b>	FEDRLKEAER EVMDLLREAQ DVKDVDQNLN DRLQRVNNTL SSQISRLQNI RNTIEETGNL AEQARAHVEN TERLIEIASR ELEKAKVAAA NVSVTQPEST GDPNNMTHLLA EEARKLAERH KQEADDIRV AKTANDTSTE AYNLLRTHLA GENQTAFEIE ELNRKYEQAK NISQDLEKQA ARVHEEAKRA GDKAVEIYAS VAQLSPLDSE TLENEANNIK MEAENLEQLI DQKLKDYEDL REDMRGKELE VKNLLEKGKT EQQTADQLLA RADAALKALAE EAAKKGRDTL QEANDILNLL KDFDRRVNDN KTAEEEEALRK IPAINQTITE

## image



## Background

<b>Alternative Names</b>	Laminin subunit gamma-1 (Laminin B2 chain) (Laminin-1 subunit gamma) (Laminin-10 subunit gamma) (Laminin-11 subunit gamma) (Laminin-2
--------------------------	---

**Product Name: Recombinant Human LAMC1 Protein**  
**Catalog #: PEH2916**



---

subunit gamma) (Laminin-3 subunit gamma) (Laminin-4 subunit gamma)  
(Laminin-6 subunit gamma) (Laminin-7 subunit gamma) (Laminin-8 subunit  
gamma) (Laminin-9 subunit gamma) (S-laminin subunit gamma) (S-LAM  
gamma)

**Note**

For Research Use Only , Not for Diagnostic Use