

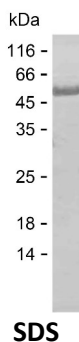
Product Name: Recombinant Human DLD Protein
Catalog #: PEH2898



Summary

Name	DLDH_HUMAN
Purity	Greater than 85% as determined by reducing SDS-PAGE
Endotoxin level	Please contact with the lab for this information
Tag	C-His
Accession #	P09622
Host	E.coli
Species	Human
Molecular Mass	51 kDa
Buffer	Lyophilized from Phosphate buffered saline
Shipping	The product is shipped on dry ice/polar packs. Upon receipt, store it immediately at the temperature listed below.
Stability&Storage	Store at $\leq -70^{\circ}\text{C}$, stable for 12 months after receipt. Store at $\leq -70^{\circ}\text{C}$, stable for 3 months under sterile conditions after opening. Please minimize freeze-thaw cycles.
Sequence	DADVTVIGSG PGGYVAAIKA AQLGFKTVC I EKNETLGGTC LNVGCIPSKA LLNNSHYHMH AHGKDFASRG IEMSEVRLNL DKMMEQKSTA VKALTGGIAH LFKQNKVVHV NGYGKITGKN QVTATKADGG TQVIDTKNIL IATGSEVTPF PGITIDEDTI VSSTGALSLK KVPEKMVVIG AGVIGVELGS VWQRLGADVT AVEFLGHVGG VGIDMEISKN FQRILQKQGF KFKLNTKVTG ATKKSDGKID VSIEAASGGK AEVITCDVLL VCIGRRPFTK NLGLEELGIE LDPRGRIPVN TRFQTKIPNI YAIGDVVAGP MLAHKAEDG IICVEGMAGG AVHIDYNCVP SVIYTHPEVA WVGKSEEQLK EEGIEYKVGK FPFAANSRAK TNADTDGMVK ILGQKSTDRV LGAHILPGA GEMVNEAALA LEYGASCEDI ARVCHAHPTL SEAFREANLA

image



Background

Product Name: Recombinant Human DLD Protein
Catalog #: PEH2898



Alternative Names

Dihydrolipoyl dehydrogenase, mitochondrial (EC 1.8.1.4) (Dihydrolipoamide dehydrogenase) (Glycine cleavage system L protein)

Note

For Research Use Only , Not for Diagnostic Use