

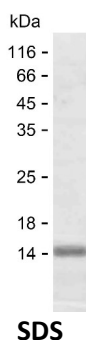
**Product Name: Recombinant Human LGALS1 Protein**  
**Catalog #: PEH2895**



## Summary

<b>Name</b>	LEG1_HUMAN
<b>Purity</b>	Greater than 85% as determined by reducing SDS-PAGE
<b>Endotoxin level</b>	Please contact with the lab for this information
<b>Tag</b>	C-His
<b>Accession #</b>	P09382
<b>Host</b>	E.coli
<b>Species</b>	Human
<b>Molecular Mass</b>	16 kDa
<b>Buffer</b>	Lyophilized from Phosphate buffered saline
<b>Shipping</b>	The product is shipped on dry ice/polar packs. Upon receipt, store it immediately at the temperature listed below.
<b>Stability&amp;Storage</b>	Store at $\leq -70^{\circ}\text{C}$ , stable for 12 months after receipt. Store at $\leq -70^{\circ}\text{C}$ , stable for 3 months under sterile conditions after opening. Please minimize freeze-thaw cycles.
<b>Sequence</b>	MACGLVASNL NLKPGELRV RGEVAPDAKS FVLNLGKDSN NLCLHFNPRF NAHGDANTIV CNSKDGGAWG TEQREAVFPF QPGSVAEVCV TFDQANLTVK LPDGYEFKFP NRLNLEAINY MAADGDFKIK CVAFD

## image



## Background

**Alternative Names** Galectin-1 (Gal-1) (14 kDa laminin-binding protein) (HLBP14) (14 kDa lectin) (Beta-galactoside-binding lectin L-14-I) (Galaptin) (HBL) (HPL) (Lactose-binding lectin 1) (Lectin galactoside-binding soluble 1) (Putative MAPK-activating protein PM12) (S-Lac lectin 1)

## Note

**Product Name: Recombinant Human LGALS1 Protein**  
**Catalog #: PEH2895**



---

For Research Use Only , Not for Diagnostic Use