

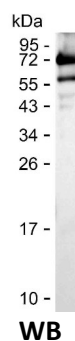
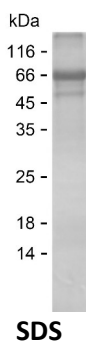
Product Name: Recombinant Human DBH Protein
Catalog #: PEH2892



Summary

Name	DOPO_HUMAN
Purity	Greater than 85% as determined by reducing SDS-PAGE
Endotoxin level	Please contact with the lab for this information
Tag	C-His
Accession #	P09172
Host	E.coli
Species	Human
Molecular Mass	66 kDa
Buffer	Lyophilized from Phosphate buffered saline
Shipping	The product is shipped on dry ice/polar packs. Upon receipt, store it immediately at the temperature listed below.
Stability&Storage	Store at $\leq -70^{\circ}\text{C}$, stable for 12 months after receipt. Store at $\leq -70^{\circ}\text{C}$, stable for 3 months under sterile conditions after opening. Please minimize freeze-thaw cycles.
Sequence	APRESPLPYH IPLDPEGSLE LSWNVSYTQE AIHFQLLVRR LKAGVLFGMS DRGELENADL VVLWTDGDTA YFADAWSDQK GQIHLDPQQD YQLLQVQRTP EGLTLLFKRP FGTCDPKDYI IEDGTVHLVY GILEEPPFRSL EAINGSGLQM GLQRVQLLKP NIPEPELPSD ACTMEVQAPN IQIPSQETTY WCYIKELPKG FSRHIIKYE PIVTKGNEAL VHHMEVFQCA PEMDSVPHFS GPCDSKMKPD RLNYCRHVLA AWALGAKAFY YPEEAGLAFG GPGSSRYLRL EVHYHNPLVI EGRNDSSGIR LYYTAKLRRF NAGIMELGLV YTPVMAIPPR ETAFILTGVC TDKCTQLALP PSGIHIFASQ LHTHLTGRKV VTVLVRDGRE WEIVNQDNHY SPHFQEIRML KKVSVHPGD VLITSCTYNT EDRELATVGG FGILEEMCVN YVHYYPQTQL ELCKSAVDAG FLQKYFHLIN RFNNEDEVCTC PQASVSQQFT SVPWNSFNRD VLKALYSFAP ISMHCNKSSA VRFQGEWNLQ PLPKVISTLE EPTQCPTSQ GRSPAGPTVV

image



Product Name: Recombinant Human DBH Protein
Catalog #: PEH2892



Background

Alternative Names Dopamine beta-hydroxylase (EC 1.14.17.1) (Dopamine beta-monoxygenase) [Cleaved into: Soluble dopamine beta-hydroxylase]

Note

For Research Use Only , Not for Diagnostic Use