

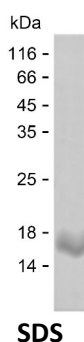
Product Name: Recombinant Human IGF1R Protein
Catalog #: PEH2870



Summary

Name	IGF1R_HUMAN
Purity	Greater than 85% as determined by reducing SDS-PAGE
Endotoxin level	Please contact with the lab for this information
Tag	C-His
Accession #	P08069
Host	E.coli
Species	Human
Molecular Mass	10 kDa
Buffer	Phosphate buffered saline
Shipping	The product is shipped on dry ice/polar packs. Upon receipt, store it immediately at the temperature listed below.
Stability&Storage	Store at $\leq -70^{\circ}\text{C}$, stable for 6 months after receipt. Store at $\leq -70^{\circ}\text{C}$, stable for 3 months under sterile conditions after opening. Please minimize freeze-thaw cycles.
Sequence	EELDLEPENM ESVPLDPSAS SSSLPLPDRH SGHKAENPG PGVLVLRASF DERQPYAHMN GGRKNERALP

image



Background

Alternative Names	Insulin-like growth factor 1 receptor (EC 2.7.10.1) (Insulin-like growth factor I receptor) (IGF-I receptor) (CD antigen CD221) [Cleaved into: Insulin-like growth factor 1 receptor alpha chain; Insulin-like growth factor 1 receptor beta chain]
--------------------------	---

Note

For Research Use Only , Not for Diagnostic Use

Product Name: Recombinant Human IGF1R Protein
Catalog #: PEH2870

