

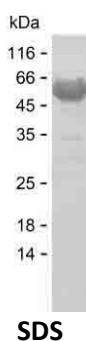
Product Name: Recombinant Human GPI Protein
Catalog #: PEH2852



Summary

Name	G6PI_HUMAN
Purity	Greater than 85% as determined by reducing SDS-PAGE
Endotoxin level	Please contact with the lab for this information
Tag	C-His
Accession #	P06744
Host	E.coli
Species	Human
Molecular Mass	64 kDa
Buffer	Phosphate buffered saline
Shipping	The product is shipped on dry ice/polar packs. Upon receipt, store it immediately at the temperature listed below.
Stability&Storage	Store at $\leq -70^{\circ}\text{C}$, stable for 6 months after receipt. Store at $\leq -70^{\circ}\text{C}$, stable for 3 months under sterile conditions after opening. Please minimize freeze-thaw cycles.
Sequence	MAALTRDPQF QKLQQWYREH RSELNLRRLF DANKDRFNHF SLTLNTNHGH ILVDYSKNLV TEDVMRMLVD LAKSRGVEAA RERMFNGEKI NYTEGRAVLH VALRNRSNTP ILVDGKDVMV EVNKVLDKMK SFCQVRVSGD WKGYTGKTIT DVINIGIGGS DLGPLMVTEA LKPYSSGGPR VWYVSNIDGT HIAKTLAQLN PESSLFIAS KTFTTQETIT NAETAKEWFL QAAKDPSAVA KHFVALSTNT TKVKEFGIDP QNMFEFWDWV GGRYSLWSAI GLSIALHVGF DNFEQLLSGA HWMDQHFRTT PLEKNAPVLL ALLGIWYINC FGCETHMLP YDQYLHRFAA YFQQGDMESN GKYITKSGTR VDHQTGPVW GEPGTNGQHA FYQLIHQGTK MIPCDFLIPV QTQHPIRKGL HHKILLANFL AQTEALMRGK STEEARKELQ AAGKSPEDLE RLLPHKVFEV NRPTNSIVFT KLTPFMLGAL VAMYEHKIFV QGIIWDINSF DQWGVELGKQ LAKKIEPELD GSAQVTSHDA STNGLINFIK QQREARVQ

image



Product Name: Recombinant Human GPI Protein
Catalog #: PEH2852



Background

Alternative Names Glucose-6-phosphate isomerase (GPI) (EC 5.3.1.9) (Autocrine motility factor)
(AMF) (Neuroleukin) (NLK) (Phosphoglucose isomerase) (PGI)
(Phosphohexose isomerase) (PHI) (Sperm antigen 36) (SA-36)

Note

For Research Use Only , Not for Diagnostic Use