

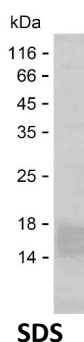
Product Name: Recombinant Human ITGB2 Protein
Catalog #: PEH2833



Summary

Name	ITB2_HUMAN
Purity	Greater than 85% as determined by reducing SDS-PAGE
Endotoxin level	Please contact with the lab for this information
Tag	C-His
Accession #	P05107
Host	E.coli
Species	Human
Molecular Mass	10 kDa
Buffer	Phosphate buffered saline
Shipping	The product is shipped on dry ice/polar packs. Upon receipt, store it immediately at the temperature listed below.
Stability&Storage	Store at $\leq -70^{\circ}\text{C}$, stable for 6 months after receipt. Store at $\leq -70^{\circ}\text{C}$, stable for 3 months under sterile conditions after opening. Please minimize freeze-thaw cycles.
Sequence	DQSRDRSLCH GKGFLCGIC RCDTGYIGKN CECQTQGRSS QELEGSCRKD NNSIICSLG DCVCGQCLCH

image



Background

Alternative Names	Integrin beta-2 (Cell surface adhesion glycoproteins LFA-1/CR3/p150,95 subunit beta) (Complement receptor C3 subunit beta) (CD antigen CD18)
--------------------------	--

Note

For Research Use Only , Not for Diagnostic Use