

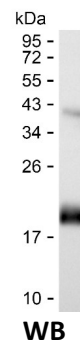
Product Name: Recombinant Human GH1 Protein
Catalog #: PEH2776



Summary

Name	SOMA_HUMAN
Purity	Greater than 85% as determined by reducing SDS-PAGE
Endotoxin level	Please contact with the lab for this information
Tag	C-His
Accession #	P01241
Host	E.coli
Species	Human
Molecular Mass	18 kDa
Buffer	Lyophilized from Phosphate buffered saline
Shipping	The product is shipped on dry ice/polar packs. Upon receipt, store it immediately at the temperature listed below.
Stability&Storage	Store at $\leq -70^{\circ}\text{C}$, stable for 12 months after receipt. Store at $\leq -70^{\circ}\text{C}$, stable for 3 months under sterile conditions after opening. Please minimize freeze-thaw cycles.
Sequence	YIPKEQKYSF LQNPQTSLCF SESIPTPSNR EETQQKS NLE LLRISLLLIQ SWLEPVQFLR SVFANSLVYG ASDSNVYDLL KDLEEGIQTL MGRLEDGSPR TGQIFKQTYS KFDTN SHNDD ALLKNYGLLY CFRKDMDKVE

image



Background

Alternative Names Somatotropin (Growth hormone) (GH) (GH-N) (Growth hormone 1) (Pituitary growth hormone)

Note

For Research Use Only , Not for Diagnostic Use