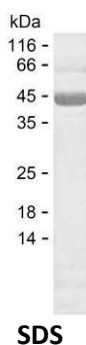


Summary

Name	CERU_HUMAN
Purity	Greater than 85% as determined by reducing SDS-PAGE
Endotoxin level	Please contact with the lab for this information
Tag	C-His
Accession #	P00450
Host	E.coli
Species	Human
Molecular Mass	41 kDa
Buffer	Phosphate buffered saline
Shipping	The product is shipped on dry ice/polar packs. Upon receipt, store it immediately at the temperature listed below.
Stability&Storage	Store at $\leq -70^{\circ}\text{C}$, stable for 6 months after receipt. Store at $\leq -70^{\circ}\text{C}$, stable for 3 months under sterile conditions after opening. Please minimize freeze-thaw cycles.
Sequence	ERTYYIAAVE VEWDYSPQRE WEKELHHLQE QNVSNAFLDK GEFYIGSKYK KVYRQYTDS TFRVPVERKA EEEHLGILGP QLHADVGDKV KIIFKNMATR PYSIHAHGVQ TESSTVPTL PGETLTYVWK IPERSGAGTE DSACIPWAYY STVDQVKDLY SGLIGPLIVC RRPYLKVFNP RRKLEFALLF LVFDENESWY LDDNIKTYSYD HPEKVNKDDE EFIESNKMHA INGRMFGNLQ GLTMHVGDEV NWYLMGMGNE IDLHTVHFHG HSFQYKHRGV YSSDVFDIFP GTYQTLEMFP RTPGIWLLHC HVTDHIHAGM ETTYTVLQNE

image



Background

Alternative Names Ceruloplasmin (EC 1.16.3.1) (Ferroxidase)

Product Name: Recombinant Human CP Protein
Catalog #: PEH2756



Note

For Research Use Only , Not for Diagnostic Use