

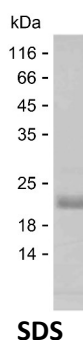
Product Name: Recombinant Human CLCA1 Protein
Catalog #: PEH2701



Summary

Name	CLCA1_HUMAN
Purity	Greater than 85% as determined by reducing SDS-PAGE
Endotoxin level	Please contact with the lab for this information
Tag	C-His
Accession #	A8K7I4
Host	E.coli
Species	Human
Molecular Mass	19 kDa
Buffer	Phosphate buffered saline
Shipping	The product is shipped on dry ice/polar packs. Upon receipt, store it immediately at the temperature listed below.
Stability&Storage	Store at $\leq -70^{\circ}\text{C}$, stable for 6 months after receipt. Store at $\leq -70^{\circ}\text{C}$, stable for 3 months under sterile conditions after opening. Please minimize freeze-thaw cycles.
Sequence	DVPNAPIPDL FPPGQITDLK AEIHGGSLIN LTWTAPGDDY DHGTAHKYII RISTSILDLR DKFNESLQVN TTALIPKEAN SEEVFLFKPE NITFENGTDL FIAIQAVDKV DLKSEISNIA RVSLFIPPQT PPETPSPDET SAPCPNIHIN

image



Background

Alternative Names	Calcium-activated chloride channel regulator 1 (EC 3.4.-.-) (Calcium-activated chloride channel family member 1) (hCLCA1) (Calcium-activated chloride channel protein 1) (CaCC-1) (hCaCC-1)
--------------------------	---

Note

For Research Use Only , Not for Diagnostic Use

Product Name: Recombinant Human CLCA1 Protein
Catalog #: PEH2701

