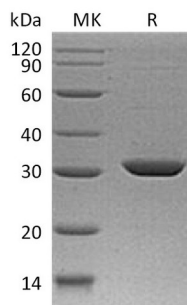


Summary

Name	Stratifin/14-3-3 Protein Sigma/Epithelial Cell Marker Protein 1/SFN/HME1
Purity	Greater than 95% as determined by reducing SDS-PAGE
Endotoxin level	<1 EU/μg as determined by LAL test.
Construction	Recombinant Human Stratifin is produced by our E.coli expression system and the target gene encoding Met1-Ser248 is expressed.
Accession #	P31947
Host	E.coli
Species	Human
Predicted Molecular Mass	27.77 KDa
Formulation	Lyophilized from a 0.2 μm filtered solution of 20mM PB, 250mM NaCl, 1mM EDTA, 1mM DTT, pH 7.4.
Shipping	The product is shipped at ambient temperature. Upon receipt, store it immediately at the temperature listed below.
Stability&Storage	Store at ≤-70°C, stable for 6 months after receipt. Store at ≤-70°C, stable for 3 months under sterile conditions after opening. Please minimize freeze-thaw cycles.
Reconstitution	Always centrifuge tubes before opening. Do not mix by vortex or pipetting. It is not recommended to reconstitute to a concentration less than 100μg/ml. Dissolve the lyophilized protein in distilled water. Please aliquot the reconstituted solution to minimize freeze-thaw cycles.

SDS-PAGE image



Background

Product Name: Recombinant Human Stratifin
Catalog #: PEH2052



Alternative Names

14-3-3 Protein Sigma; Epithelial Cell Marker Protein 1; Stratifin; SFN; HME1

Background

Stratifin (SFN) belongs to the 14-3-3 family of proteins that act as important regulators of intracellular signal transduction through their ability to bind specific motifs phosphorylated on serine or threonine. There are at least seven isoforms that have been identified in mammals (beta, gamma, epsilon, sigma, zeta, tau and eta). SFN can be detected in many tissues, highly expressed in stratified squamous keratinizing epithelium. SFN is indicated as an epithelial cell marker and serves as a tumor suppressor whose expression can be down regulated by methylation. In addition, SFN plays a key role in maintaining the G2 checkpoint in cells and preventing mitotic death.

Note

For Research Use Only , Not for Diagnostic Use.