

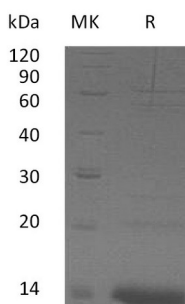
**Product Name: Recombinant Human ZNF75A (N-6His)**  
**Catalog #: PEH1845**



## Summary

<b>Name</b>	Zinc finger protein 75A/ZNF75A
<b>Purity</b>	Greater than 95% as determined by reducing SDS-PAGE
<b>Endotoxin level</b>	<1 EU/μg as determined by LAL test.
<b>Construction</b>	Recombinant Human Zinc Finger Protein 75A is produced by our E.coli expression system and the target gene encoding Ser58-Lys162 is expressed with a 6His tag at the N-terminus.
<b>Accession #</b>	Q96N20
<b>Host</b>	E.coli
<b>Species</b>	Human
<b>Predicted Molecular Mass</b>	14.33 KDa
<b>Formulation</b>	Lyophilized from a 0.2 μm filtered solution of PBS, pH 7.4.
<b>Shipping</b>	The product is shipped at ambient temperature. Upon receipt, store it immediately at the temperature listed below.
<b>Stability&amp;Storage</b>	Store at ≤-70°C, stable for 6 months after receipt. Store at ≤-70°C, stable for 3 months under sterile conditions after opening. Please minimize freeze-thaw cycles.
<b>Reconstitution</b>	Always centrifuge tubes before opening. Do not mix by vortex or pipetting. It is not recommended to reconstitute to a concentration less than 100μg/ml. Dissolve the lyophilized protein in distilled water. Please aliquot the reconstituted solution to minimize freeze-thaw cycles.

## SDS-PAGE image



## Background

**Product Name: Recombinant Human ZNF75A (N-6His)**  
**Catalog #: PEH1845**

---



**Alternative Names** Zinc Finger Protein 75A; ZNF75A

**Background** Zinc Finger Protein 75A (ZNF75A) is a member of krueppel C2H2-type zinc-finger protein family. The human ZNF75 gene is located on Xq26, which has only limited homology (less than 65%) to other ZF genes in the databases. One of these, ZNF75B is a pseudogene mapped to chromosome 12q13. The other two, ZNF75A and ZNF75C, maintain an ORF in the sequenced region, and at least the latter is expressed in the U937 cell line. ZNF75A contains five C2H2-type zinc fingers and one KRAB domain. ZNF75A is a nucleus protein, may involves in transcriptional regulation.

## **Note**

For Research Use Only , Not for Diagnostic Use.