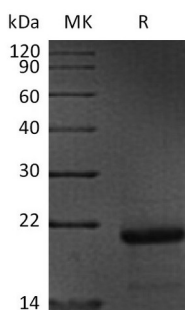


Summary

Name	WW domain-binding protein 1/WBP1
Purity	Greater than 95% as determined by reducing SDS-PAGE
Endotoxin level	<1 EU/μg as determined by LAL test.
Construction	Recombinant Human WW Domain-Binding Protein 1 is produced by our E.coli expression system and the target gene encoding Gly170-Pro269 is expressed with a 6His tag at the N-terminus.
Accession #	Q96G27
Host	E.coli
Species	Human
Predicted Molecular Mass	12.6 KDa
Formulation	Lyophilized from a 0.2 μm filtered solution of 20mM PB, 150mM NaCl, pH 7.2.
Shipping	The product is shipped at ambient temperature. Upon receipt, store it immediately at the temperature listed below.
Stability&Storage	Store at ≤-70°C, stable for 6 months after receipt. Store at ≤-70°C, stable for 3 months under sterile conditions after opening. Please minimize freeze-thaw cycles.
Reconstitution	Always centrifuge tubes before opening. Do not mix by vortex or pipetting. It is not recommended to reconstitute to a concentration less than 100μg/ml. Dissolve the lyophilized protein in distilled water. Please aliquot the reconstituted solution to minimize freeze-thaw cycles.

SDS-PAGE image



Background

Product Name: Recombinant Human WBP1 (N-6His)
Catalog #: PEH1832



Alternative Names

WW Domain-Binding Protein 1; WBP-1; WBP1

Background

WW Domain-Binding Protein 1 (WBP1) is widely expressed in many tissues, but it is lowly expressed in the lung, placenta, kidney, and liver. WBP1 contains two WW-binding motifs: WW-binding 1 and WW-binding 2 that are involved in mediating protein-protein interactions through the binding of polyproline ligands. The WW-binding domain is composed of 38 to 40 semi-conserved amino acids shared by proteins with diverse functions including structural, regulatory, and signaling proteins. In addition, WBP1 also encodes a ligand of the WW domain of the Yes kinase-associated protein. This function has not been determined.

Note

For Research Use Only , Not for Diagnostic Use.