

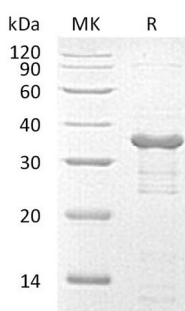
Product Name: Recombinant Human UBE2R2 (N-6His)
Catalog #: PEH1782



Summary

Name	Ubiquitin-Conjugating Enzyme E2 R2/Ube2R2
Purity	Greater than 95% as determined by reducing SDS-PAGE
Endotoxin level	<1 EU/μg as determined by LAL test.
Construction	Recombinant Human Ubiquitin-Conjugating Enzyme E2 R2 is produced by our E.coli expression system and the target gene encoding Met1-Ser238 is expressed with a 6His tag at the N-terminus.
Accession #	Q712K3
Host	E.coli
Species	Human
Predicted Molecular Mass	29.3 KDa
Formulation	Supplied as a 0.2 μm filtered solution of 50mM HEPES, 150mM NaCl, pH 7.5.
Shipping	The product is shipped on dry ice/polar packs. Upon receipt, store it immediately at the temperature listed below.
Stability&Storage	Store at ≤-70°C, stable for 6 months after receipt. Store at ≤-70°C, stable for 3 months under sterile conditions after opening. Please minimize freeze-thaw cycles.
Reconstitution	

SDS-PAGE image



Background

Alternative Names	Ubiquitin-Conjugating Enzyme E2 R2; Ubiquitin Carrier Protein R2; Ubiquitin-Conjugating Enzyme E2-CDC34B; Ubiquitin-Protein Ligase R2; UBE2R2; CDC34B; UBC3B
Background	Ubiquitin-Conjugating Enzyme E2 R2 (UBE2R2) is a modification enzyme that

Product Name: Recombinant Human UBE2R2 (N-6His)
Catalog #: PEH1782



belongs to the ubiquitin-conjugating enzyme family. UBE2R2 is involved in cell growth and transformation. It accepts ubiquitin from the E1 complex and catalyzes its covalent attachment to other proteins. In vitro, UBE2R2 catalyzes monoubiquitination and Lys-48-linked polyubiquitination. It may be involved in degradation of katenin.

Note

For Research Use Only , Not for Diagnostic Use.