

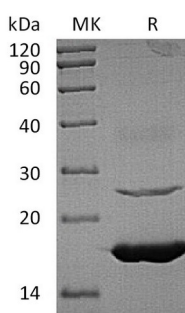
**Product Name: Recombinant Human UBE2L6 (C-6His)**  
**Catalog #: PEH1769**



## Summary

<b>Name</b>	UBE2L6/Ubiquitin/ISG15-conjugating enzyme E2 L6/UBCH8
<b>Purity</b>	Greater than 95% as determined by reducing SDS-PAGE
<b>Endotoxin level</b>	<1 EU/μg as determined by LAL test.
<b>Construction</b>	Recombinant Human Ubiquitin-Conjugating Enzyme E2 L6 is produced by our E.coli expression system and the target gene encoding Met1-Ser153 is expressed with a 6His tag at the C-terminus.
<b>Accession #</b>	O14933
<b>Host</b>	E.coli
<b>Species</b>	Human
<b>Predicted Molecular Mass</b>	18.8 KDa
<b>Formulation</b>	Supplied as a 0.2 μm filtered solution of 50mM HEPES, 100mM NaCl, pH 8.0.
<b>Shipping</b>	The product is shipped on dry ice/polar packs. Upon receipt, store it immediately at the temperature listed below.
<b>Stability&amp;Storage</b>	Store at ≤-70°C, stable for 6 months after receipt. Store at ≤-70°C, stable for 3 months under sterile conditions after opening. Please minimize freeze-thaw cycles.
<b>Reconstitution</b>	

## SDS-PAGE image



## Background

<b>Alternative Names</b>	Ubiquitin/ISG15-Conjugating Enzyme E2 L6; Retinoic Acid-Induced Gene B Protein; RIG-B; Ubch8; Ubiquitin Carrier Protein L6; Ubiquitin-Protein Ligase L6; UBE2L6; UBCH8
<b>Background</b>	Ubiquitin/ISG15-Conjugating Enzyme E2 L6 (UBE2L6) is an enzyme member of the

**Product Name: Recombinant Human UBE2L6 (C-6His)**  
**Catalog #: PEH1769**

---



E2 ubiquitin-conjugating enzyme family. UBE2L6 plays a same function as UBE2D, it catalyzes the covalent attachment of ubiquitin or ISG15 to other proteins. UBE2L6 promotes ubiquitination and subsequent proteasomal degradation of FLT3. It has functions in the E6/E6-AP-induced ubiquitination of p53/TP53.

#### **Note**

For Research Use Only , Not for Diagnostic Use.