

**Product Name: Recombinant Human UBE2A (N-GST, 6His)**  
**Catalog #: PEH1760**



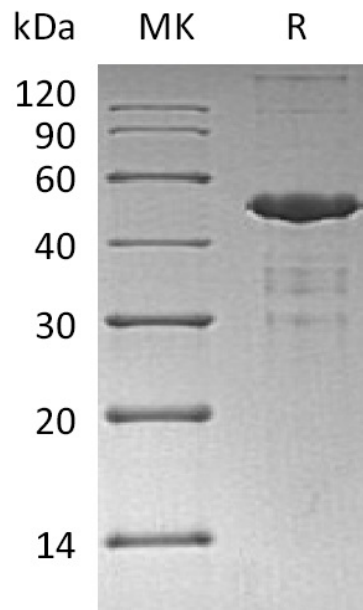
---

## Summary

<b>Name</b>	UBE2A/HR6A
<b>Purity</b>	Greater than 95% as determined by reducing SDS-PAGE
<b>Endotoxin level</b>	<1 EU/μg as determined by LAL test.
<b>Construction</b>	Recombinant Human Ubiquitin-Conjugating Enzyme E2 A is produced by our E.coli expression system and the target gene encoding Met1-Cys152 is expressed with a GST, 6His tag at the N-terminus.
<b>Accession #</b>	P49459
<b>Host</b>	E.coli
<b>Species</b>	Human
<b>Predicted Molecular Mass</b>	49 KDa
<b>Formulation</b>	Supplied as a 0.2 μm filtered solution of 50mM HEPES, 150mM NaCl, 2mM DTT, 10% Glycerol, pH 7.5.
<b>Shipping</b>	The product is shipped on dry ice/polar packs. Upon receipt, store it immediately at the temperature listed below.
<b>Stability&amp;Storage</b>	Store at ≤-70°C, stable for 6 months after receipt. Store at ≤-70°C, stable for 3 months under sterile conditions after opening. Please minimize freeze-thaw cycles.
<b>Reconstitution</b>	

## SDS-PAGE image

**Product Name: Recombinant Human UBE2A (N-GST, 6His)**  
**Catalog #: PEH1760**



### Alternative Names

Ubiquitin-Conjugating Enzyme E2 A; RAD6 Homolog A; HR6A; hHR6A; Ubiquitin Carrier Protein A; Ubiquitin-Protein Ligase A; UBE2A; RAD6A

### Background

Ubiquitin-Conjugating Enzyme E2 (UBE2A) is a member of the E2 Ubiquitin-Conjugating Enzyme family. The modification of proteins with ubiquitin is an important cellular mechanism for targeting abnormal or short-lived proteins for degradation. Ubiquitination involves at least three classes of enzymes: ubiquitin-activating enzymes, or E1s, ubiquitin-conjugating enzymes, or E2s, and ubiquitin-protein ligases, or E3s. UBE2A catalyzes the covalent attachment of ubiquitin to other proteins. UBE2A is required for postreplication repair of UV-damaged DNA. UBE2A Interacts with RAD18 and WAC.

### Note

For Research Use Only , Not for Diagnostic Use.