

Product Name: Recombinant Human TUBB4A (N-6His)
Catalog #: PEH1741

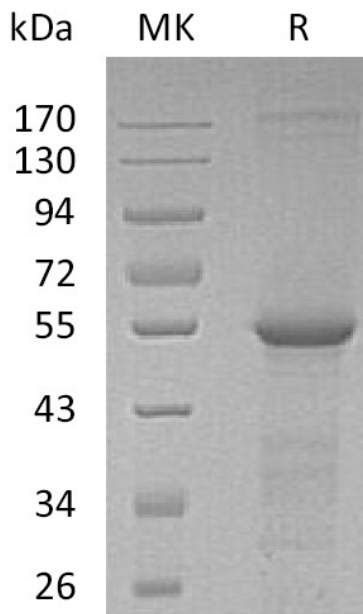


Summary

Name	Tubulin beta-4 chain/TUBB4
Purity	Greater than 95% as determined by reducing SDS-PAGE
Endotoxin level	<1 EU/μg as determined by LAL test.
Construction	Recombinant Human Tubulin Beta-4A Chain is produced by our E.coli expression system and the target gene encoding Met1-Ala444 is expressed with a 6His tag at the N-terminus.
Accession #	P04350
Host	E.coli
Species	Human
Predicted Molecular Mass	51.7 KDa
Formulation	Lyophilized from a 0.2 μm filtered solution of 20mM Histidine-HCl, 10% Trehalose, 100mM NaCl, 0.05% Tween 80, pH6.5.
Shipping	The product is shipped at ambient temperature. Upon receipt, store it immediately at the temperature listed below.
Stability&Storage	Lyophilized protein should be stored at ≤ -20°C, stable for one year after receipt. Reconstituted protein solution can be stored at 2-8°C for 2-7 days. Aliquots of reconstituted samples are stable at ≤ -20°C for 3 months.
Reconstitution	Always centrifuge tubes before opening. Do not mix by vortex or pipetting. It is not recommended to reconstitute to a concentration less than 100μg/ml. Dissolve the lyophilized protein in distilled water. Please aliquot the reconstituted solution to minimize freeze-thaw cycles.

SDS-PAGE image

Product Name: Recombinant Human TUBB4A (N-6His)
Catalog #: PEH1741



Alternative Names

Tubulin Beta-4A Chain; Tubulin 5 Beta; Tubulin Beta-4 Chain; TUBB4A; TUBB4; TUBB5

Background

Tubulin Beta-4A Chain (TUBB4A) is a cytoplasmic peptide containing 444 amino acids. TUBB4A is a member of the Tubulin family. Tubulin is the major constituent of microtubules. Tubulin is a dimer composed of one alpha and one beta tubulin molecule; there are many forms of beta tubulins, Beta II and Beta IV Tubulin are ubiquitously expressed. Beta-III Tubulin, also known as Tubulin Beta-4, is regarded as a neuron-specific marker. It binds two moles of GTP, one at an exchangeable site on the beta chain and one at a non-exchangeable site on the alpha-chain.

Note

For Research Use Only , Not for Diagnostic Use.