

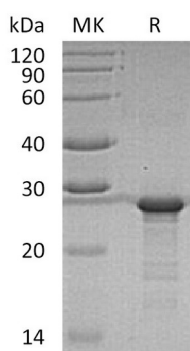
Product Name: Recombinant Human YKT6 (N-6His)
Catalog #: PEH1594



Summary

Name	Synaptobrevin homolog YKT6/YkT6
Purity	Greater than 95% as determined by reducing SDS-PAGE
Endotoxin level	<1 EU/μg as determined by LAL test.
Construction	Recombinant Human Synaptobrevin Homolog YKT6 is produced by our E.coli expression system and the target gene encoding Met1-Met198 is expressed with a 6His tag at the N-terminus.
Accession #	O15498
Host	E.coli
Species	Human
Predicted Molecular Mass	24.5 KDa
Formulation	Supplied as a 0.2 μm filtered solution of 50mM Tris-HCl, pH 8.0.
Shipping	The product is shipped on dry ice/polar packs. Upon receipt, store it immediately at the temperature listed below.
Stability&Storage	Store at ≤-70°C, stable for 6 months after receipt. Store at ≤-70°C, stable for 3 months under sterile conditions after opening. Please minimize freeze-thaw cycles.
Reconstitution	

SDS-PAGE image



Background

Alternative Names	Synaptobrevin homolog YKT6; YKT6
Background	Synaptobrevin Homolog YKT6 (YKT6) is an enzyme that belongs to the

Product Name: Recombinant Human YKT6 (N-6His)
Catalog #: PEH1594



Synaptobrevin family. YKT6 contains a longin domain and a v-SNARE coiled-coil homology domain. YKT6 is highly conserved from yeast to human and it can functionally complement the loss of the yeast homolog in the yeast secretory pathway. It is a membrane associated, isoprenylated protein that functions at the endoplasmic reticulum-Golgi transport step. YKT6 is considered as one of the SNARE recognition molecules implicated in vesicular transport between secretory compartments.

Note

For Research Use Only , Not for Diagnostic Use.