

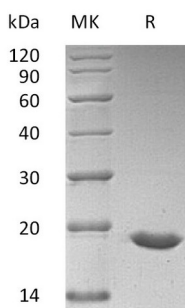
Product Name: Recombinant Human SUMO3 (N-6His)
Catalog #: PEH1592



Summary

Name	SUMO3/SMT3B/SMT3H1
Purity	Greater than 95% as determined by reducing SDS-PAGE
Endotoxin level	<1 EU/μg as determined by LAL test.
Construction	Recombinant Human Small Ubiquitin-Related Modifier 3 is produced by our E.coli expression system and the target gene encoding Met1-Phe103 is expressed with a 6His tag at the N-terminus.
Accession #	P55854
Host	E.coli
Species	Human
Predicted Molecular Mass	13.8 KDa
Formulation	Lyophilized from a 0.2 μm filtered solution of 20mM PB, 150mM NaCl, pH 7.2.
Shipping	The product is shipped at ambient temperature. Upon receipt, store it immediately at the temperature listed below.
Stability&Storage	Store at ≤-70°C, stable for 6 months after receipt. Store at ≤-70°C, stable for 3 months under sterile conditions after opening. Please minimize freeze-thaw cycles.
Reconstitution	Always centrifuge tubes before opening. Do not mix by vortex or pipetting. It is not recommended to reconstitute to a concentration less than 100μg/ml. Dissolve the lyophilized protein in distilled water. Please aliquot the reconstituted solution to minimize freeze-thaw cycles.

SDS-PAGE image



Background

Product Name: Recombinant Human SUMO3 (N-6His)
Catalog #: PEH1592



Alternative Names

Small Ubiquitin-Related Modifier 3; SUMO-3; SMT3 Homolog 1; SUMO-2; Ubiquitin-Like Protein SMT3B; Smt3B; SUMO3; SMT3B; SMT3H1

Background

SUMO3 belongs to the SUMO protein family and operates like ubiquitin. Ubiquitin-like protein which can be covalently attached to target lysines either as a monomer or as a lysine-linked polymer. Nevertheless unlike ubiquitin that targets proteins for degradation, SUMO3 takes part in several cellular processes, such as nuclear transport, transcription regulation, apoptosis and protein stability. SUMO3 participates in amyloid beta generation and has a key role in the onset or progression of Alzheimer's disease.

Note

For Research Use Only , Not for Diagnostic Use.