

Product Name: Recombinant Human SULT1A3 (N-6His)
Catalog #: PEH1583

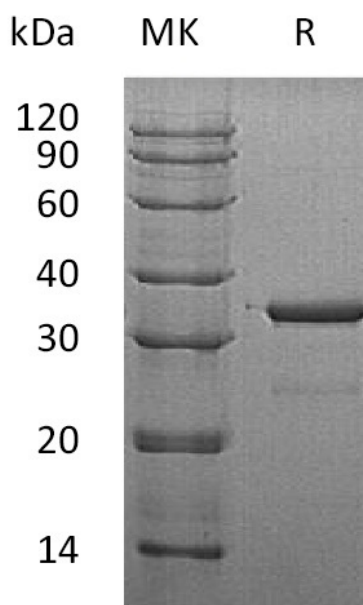


Summary

Name	SULT1A3/Cytosolic Sulfotransferase 1A3
Purity	Greater than 95% as determined by reducing SDS-PAGE
Endotoxin level	<1 EU/μg as determined by LAL test.
Construction	Recombinant Human Cytosolic Sulfotransferase Family 1A Member 3 is produced by our E.coli expression system and the target gene encoding Met1-Leu295 is expressed with a 6His tag at the N-terminus.
Accession #	P0DMM9
Host	E.coli
Species	Human
Predicted Molecular Mass	35.6 KDa
Formulation	Supplied as a 0.2 μm filtered solution of 20mM Tris-HCl, 6% Sucrose, 4% Mannitol, 0.05% Tween80, pH 8.5.
Shipping	The product is shipped on dry ice/polar packs. Upon receipt, store it immediately at the temperature listed below.
Stability&Storage	Store at ≤-70°C, stable for 6 months after receipt. Store at ≤-70°C, stable for 3 months under sterile conditions after opening. Please minimize freeze-thaw cycles.
Reconstitution	

SDS-PAGE image

Product Name: Recombinant Human SULT1A3 (N-6His)
Catalog #: PEH1583



Alternative Names

Sulfotransferase 1A3/1A4; ST1A3/ST1A4; Aryl Sulfotransferase 1A3/1A4; Catecholamine-Sulfating Phenol Sulfotransferase; HAST3; M-PST; Monoamine-Sulfating Phenol Sulfotransferase; Placental Estrogen Sulfotransferase; Sulfotransferase Monoamine-Preferring; Thermolabile Phenol Sulfotransferase; TL-PST; SULT1A3; STM; SULT1A4

Background

Sulfotransferase 1A3/1A4 (SULT1A3) is 295 amino acids in length and localizes to the cytoplasm. It is a member of the Sulfotransferase 1 family. SULT1A3 can be found in the liver, colon, kidney, lung, brain, spleen, small intestine, placenta, and leukocytes. SULT1A3 exists as a homodimer and it catalyzes the sulfation of phenolic monoamines, such as dopamine, norepinephrine and serotonin, and phenolic and catecholic drugs.

Note

For Research Use Only , Not for Diagnostic Use.