

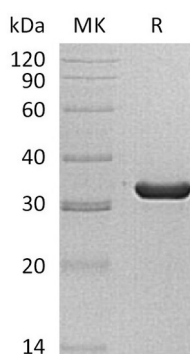
**Product Name: Recombinant Human SULT1C2 (N-6His)**  
**Catalog #: PEH1581**



## Summary

<b>Name</b>	Sulfotransferase 1C4/SULT1C2
<b>Purity</b>	Greater than 95% as determined by reducing SDS-PAGE
<b>Endotoxin level</b>	<1 EU/μg as determined by LAL test.
<b>Construction</b>	Recombinant Human Cytosolic Sulfotransferase Family 1C Member 2 is produced by our E.coli expression system and the target gene encoding Met1-Leu296 is expressed with a 6His tag at the N-terminus.
<b>Accession #</b>	O00338
<b>Host</b>	E.coli
<b>Species</b>	Human
<b>Predicted Molecular Mass</b>	36.3 KDa
<b>Formulation</b>	Supplied as a 0.2 μm filtered solution of 20mM Tris-HCl, 100mM NaCl, pH 8.5.
<b>Shipping</b>	The product is shipped on dry ice/polar packs. Upon receipt, store it immediately at the temperature listed below.
<b>Stability&amp;Storage</b>	Store at ≤-70°C, stable for 6 months after receipt. Store at ≤-70°C, stable for 3 months under sterile conditions after opening. Please minimize freeze-thaw cycles.
<b>Reconstitution</b>	

## SDS-PAGE image



## Background

<b>Alternative Names</b>	Sulfotransferase 1C2; ST1C2; Sulfotransferase 1C1; SULT1C#1; humSULTC2; SULT1C2; SULT1C1;
<b>Background</b>	Sulfotransferase 1C2 (SULT1C2) is a cytosolic enzyme member of the

**Product Name: Recombinant Human SULT1C2 (N-6His)**  
**Catalog #: PEH1581**

---



Sulfotransferase 1 family. Human SULT1C2 is primarily expressed in the adult stomach, kidney and thyroid gland, and in the fetal kidney and liver. SULT1C2 catalyzes the sulfate conjugation of drugs, xenobiotic compounds, hormones, and neurotransmitters. SULT1C2 may be involved in the activation of carcinogenic hydroxylamines. It shows activity towards p-nitrophenol and N-hydroxy-2-acetylamino-fluorene (N-OH-2AAF).

### **Note**

For Research Use Only , Not for Diagnostic Use.