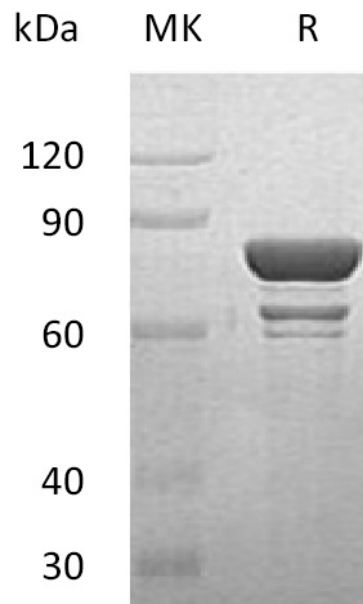


## Summary

<b>Name</b>	STAT1
<b>Purity</b>	Greater than 95% as determined by reducing SDS-PAGE
<b>Endotoxin level</b>	<1 EU/μg as determined by LAL test.
<b>Construction</b>	Recombinant Human Signal Transducer And Activator Of Transcription 1 is produced by our E.coli expression system and the target gene encoding Met1-Val712 is expressed.
<b>Accession #</b>	P42224
<b>Host</b>	E.coli
<b>Species</b>	Human
<b>Predicted Molecular Mass</b>	83.3 KDa
<b>Formulation</b>	Lyophilized from a 0.2 μm filtered solution of 20mM PB, 0.02% Tween 80, 5% Sucrose, 4% Mannitol, pH 7.4.
<b>Shipping</b>	The product is shipped at ambient temperature. Upon receipt, store it immediately at the temperature listed below.
<b>Stability&amp;Storage</b>	Store at ≤-70°C, stable for 6 months after receipt. Store at ≤-70°C, stable for 3 months under sterile conditions after opening. Please minimize freeze-thaw cycles.
<b>Reconstitution</b>	Always centrifuge tubes before opening. Do not mix by vortex or pipetting. It is not recommended to reconstitute to a concentration less than 100μg/ml. Dissolve the lyophilized protein in distilled water. Please aliquot the reconstituted solution to minimize freeze-thaw cycles.

## SDS-PAGE image

**Product Name: Recombinant Human STAT1**  
**Catalog #: PEH1567**



### **Alternative Names**

Signal Transducer and Activator of Transcription 1-Alpha/Beta; Transcription Factor ISGF-3 Components p91/p84; STAT1

### **Background**

Signal Transducer and Activator of Transcription 1-Alpha/Beta (STAT1) contains one SH2 domain and belongs to the transcription factor STAT family. When tyrosine- and serine-phosphorylated, STAT1 can form a homodimer termed IFN-gamma-activated factor (GAF), migrate into the nucleus and bind to the IFN gamma activated sequence (GAS) to drive the expression of the target genes, inducing a cellular antiviral state. STAT1 functions as signal transducer and transcription activator that mediates cellular responses to interferons. Defects in STAT1 are the cause of STAT1 deficiency complete and familial candidiasis type 7.

### **Note**

For Research Use Only , Not for Diagnostic Use.