

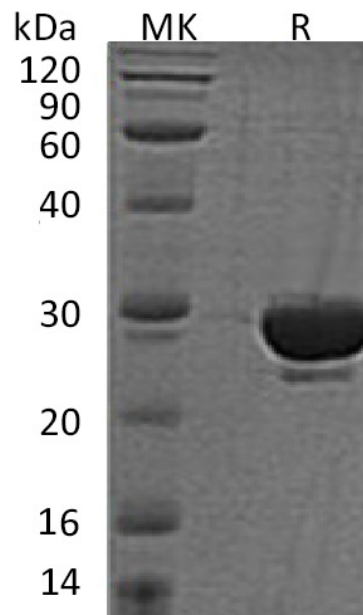
---

## Summary

<b>Name</b>	SUMO1/SEN2/Sentrin-specific protease 2
<b>Purity</b>	Greater than 95% as determined by reducing SDS-PAGE
<b>Endotoxin level</b>	<1 EU/μg as determined by LAL test.
<b>Construction</b>	Recombinant Human Sentrin-specific Protease 2 is produced by our E.coli expression system and the target gene encoding Asp363-Leu589 is expressed.
<b>Accession #</b>	Q9HC62
<b>Host</b>	E.coli
<b>Species</b>	Human
<b>Predicted Molecular Mass</b>	26.8 KDa
<b>Formulation</b>	Supplied as a 0.2 μm filtered solution of 50mM HEPES, 5% Glycerol, pH 7.4.
<b>Shipping</b>	The product is shipped on dry ice/polar packs. Upon receipt, store it immediately at the temperature listed below.
<b>Stability&amp;Storage</b>	Store at ≤-70°C, stable for 6 months after receipt. Store at ≤-70°C, stable for 3 months under sterile conditions after opening. Please minimize freeze-thaw cycles.
<b>Reconstitution</b>	

## SDS-PAGE image

**Product Name: Recombinant Human SENP2**  
**Catalog #: PEH1490**



### Alternative Names

Sentrin-specific protease 2; Axam2; SMT3-specific isopeptidase 2; Sentrin/SUMO-specific protease SENP2; KIAA1331; SENP2.

### Background

SENP2 is an enzyme that belongs to the peptidase C48 family. SENP2 is a protease that catalyzes two essential functions in the SUMO pathway: processing of full-length SUMO1, SUMO2 and SUMO3 to their mature forms and deconjugation of SUMO1, SUMO2 and SUMO3 from targeted proteins. SUMO1 is a small ubiquitin-like protein that can be covalently conjugated to other proteins. It has been implicated as a down-regulator of CTNNB1 levels and may therefore be a modulator of the Wnt pathway.

### Note

For Research Use Only , Not for Diagnostic Use.