

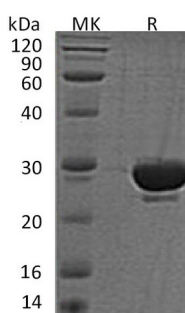
Product Name: Recombinant Human SENP2
Catalog #: PEH1490



Summary

Name	SUMO1/SEN2/Sentrin-specific protease 2
Purity	Greater than 95% as determined by reducing SDS-PAGE
Endotoxin level	<1 EU/μg as determined by LAL test.
Construction	Recombinant Human Sentrin-specific Protease 2 is produced by our E.coli expression system and the target gene encoding Asp363-Leu589 is expressed.
Accession #	Q9HC62
Host	E.coli
Species	Human
Predicted Molecular Mass	26.8 KDa
Formulation	Supplied as a 0.2 μm filtered solution of 50mM HEPES, 5% Glycerol, pH 7.4.
Shipping	The product is shipped on dry ice/polar packs. Upon receipt, store it immediately at the temperature listed below.
Stability&Storage	Store at ≤-70°C, stable for 6 months after receipt. Store at ≤-70°C, stable for 3 months under sterile conditions after opening. Please minimize freeze-thaw cycles.
Reconstitution	

SDS-PAGE image



Background

Alternative Names	Sentrin-specific protease 2; Axam2; SMT3-specific isopeptidase 2; Sentrin/SUMO-specific protease SENP2; KIAA1331; SENP2.
Background	SENP2 is an enzyme that belongs to the peptidase C48 family. SENP2 is a protease that catalyzes two essential functions in the SUMO pathway: processing of full-

Product Name: Recombinant Human SENP2
Catalog #: PEH1490

length SUMO1, SUMO2 and SUMO3 to their mature forms and deconjugation of SUMO1, SUMO2 and SUMO3 from targeted proteins. SUMO1 is a small ubiquitin-like protein that can be covalently conjugated to other proteins. It has been implicated as a down-regulator of CTNNB1 levels and may therefore be a modulator of the Wnt pathway.

Note

For Research Use Only , Not for Diagnostic Use.