

**Product Name: Recombinant Human RPS19**  
**Catalog #: PEH1446**

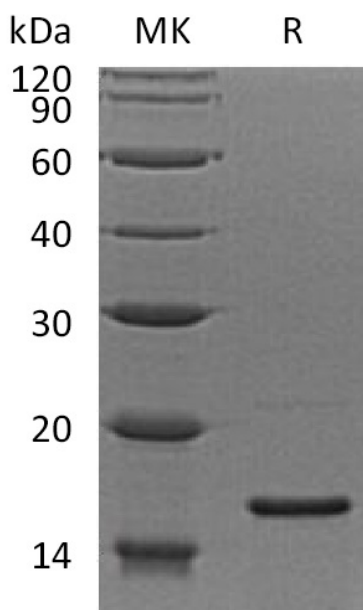


## Summary

<b>Name</b>	RPS19/40S ribosomal protein S19
<b>Purity</b>	Greater than 95% as determined by reducing SDS-PAGE
<b>Endotoxin level</b>	<1 EU/μg as determined by LAL test.
<b>Construction</b>	Recombinant Human 40S Ribosomal Protein S19 is produced by our E.coli expression system and the target gene encoding Pro2-His145 is expressed.
<b>Accession #</b>	P39019
<b>Host</b>	E.coli
<b>Species</b>	Human
<b>Predicted Molecular Mass</b>	16.1 KDa
<b>Formulation</b>	Lyophilized from a 0.2 μm filtered solution of PBS, 1mM EDTA, pH 7.4.
<b>Shipping</b>	The product is shipped at ambient temperature. Upon receipt, store it immediately at the temperature listed below.
<b>Stability&amp;Storage</b>	Store at ≤-70°C, stable for 6 months after receipt. Store at ≤-70°C, stable for 3 months under sterile conditions after opening. Please minimize freeze-thaw cycles.
<b>Reconstitution</b>	Always centrifuge tubes before opening. Do not mix by vortex or pipetting. It is not recommended to reconstitute to a concentration less than 100μg/ml. Dissolve the lyophilized protein in distilled water. Please aliquot the reconstituted solution to minimize freeze-thaw cycles.

## SDS-PAGE image

**Product Name: Recombinant Human RPS19**  
**Catalog #: PEH1446**



### Alternative Names

40S Ribosomal Protein S19; RPS19

### Background

40S Ribosomal Protein S19 (RPS19) is a ribosomal protein that belongs to the ribosomal protein S19e family. RPS19 is located in the nucleoli, and higher level expression is seen in colon carcinoma tissue than normal colon tissue. It required for pre-rRNA processing and maturation of 40S ribosomal subunits. RPS19 plays a role in many biological processes, such as endocrine pancreas development, erythrocyte differentiation, mRNA metabolic process. Defects in RPS19 are the cause of Diamond-Blackfan anemia type 1 (DBA1), which is a form of Diamond-Blackfan anemia, a congenital non-regenerative hypoplastic anemia that usually presents early in infancy. Diamond-Blackfan anemia is characterized by a moderate to severe macrocytic anemia, erythroblastopenia, and an increased risk of malignancy.

### Note

For Research Use Only , Not for Diagnostic Use.