

Product Name: Recombinant Human PPIL1 (N-6His)
Catalog #: PEH1306

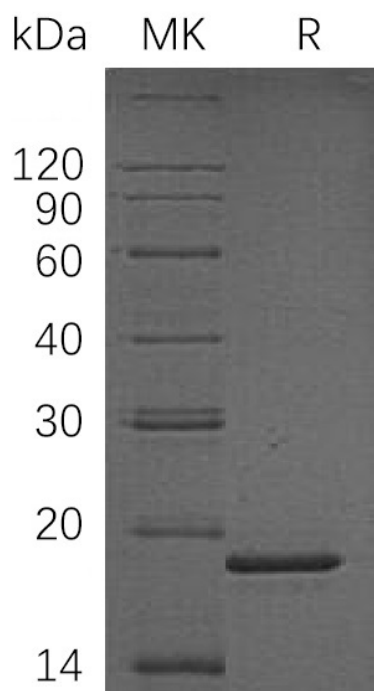


Summary

Name	Peptidyl-prolyl cis-trans isomerase-like 1/PPIL1
Purity	Greater than 95% as determined by reducing SDS-PAGE
Endotoxin level	<1 EU/μg as determined by LAL test.
Construction	Recombinant Human Peptidyl-Prolyl Cis-Trans Isomerase-Like 1 is produced by our E.coli expression system and the target gene encoding Met1-Gly166 is expressed with a 6His tag at the N-terminus.
Accession #	Q9Y3C6
Host	E.coli
Species	Human
Predicted Molecular Mass	20.4 KDa
Formulation	Supplied as a 0.2 μm filtered solution of 20mM Tris-HCl, pH 8.0.
Shipping	The product is shipped on dry ice/polar packs. Upon receipt, store it immediately at the temperature listed below.
Stability&Storage	Store at ≤-70°C, stable for 6 months after receipt. Store at ≤-70°C, stable for 3 months under sterile conditions after opening. Please minimize freeze-thaw cycles.
Reconstitution	

SDS-PAGE image

Product Name: Recombinant Human PPIL1 (N-6His)
Catalog #: PEH1306



Alternative Names

Peptidyl-Prolyl Cis-Trans Isomerase-Like 1; PPlase; Rotamase PPIL1; PPIL1; CYPL1

Background

Peptidyl-Prolyl Cis-Trans Isomerase-Like 1 (PPlase) belongs to the cyclophilin-type PPlase family. PPlases can accelerate the folding of proteins and catalyze the cis-trans isomerization of proline imidic peptide bonds in oligopeptides. PPlase is a ubiquitous protein and has highly expression in heart ,skeletal and muscle. PPlase contains a PPlase cyclophilin-type domain and four Cyclosporin A binding regions. PPlase might play an important role in proliferation of cancer cells through modulation of phosphorylation of stathmin. It is suggested that PPlase can act as as a novel molecular target for colon-cancer therapy.

Note

For Research Use Only , Not for Diagnostic Use.