

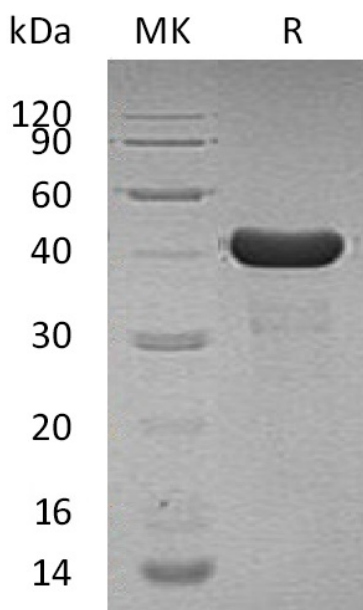
**Product Name: Recombinant Human PPID (N, C-6His)**  
**Catalog #: PEH1304**



## Summary

<b>Name</b>	Peptidyl-Prolyl Cis-Trans Isomerase D/Ppid
<b>Purity</b>	Greater than 95% as determined by reducing SDS-PAGE
<b>Endotoxin level</b>	<1 EU/μg as determined by LAL test.
<b>Construction</b>	Recombinant Human Peptidyl-Prolyl Cis-Trans Isomerase D is produced by our E.coli expression system and the target gene encoding Met1-Ala370 is expressed with a 6His tag at the N-terminus, 6His tag at the C-terminus.
<b>Accession #</b>	Q08752
<b>Host</b>	E.coli
<b>Species</b>	Human
<b>Predicted Molecular Mass</b>	43.9 KDa
<b>Formulation</b>	Supplied as a 0.2 μm filtered solution of PBS, 10% Glycerol, pH 7.4.
<b>Shipping</b>	The product is shipped on dry ice/polar packs. Upon receipt, store it immediately at the temperature listed below.
<b>Stability&amp;Storage</b>	Store at ≤-70°C, stable for 6 months after receipt. Store at ≤-70°C, stable for 3 months under sterile conditions after opening. Please minimize freeze-thaw cycles.
<b>Reconstitution</b>	

## SDS-PAGE image



**Product Name: Recombinant Human PPID (N, C-6His)**  
**Catalog #: PEH1304**

---



### **Alternative Names**

Peptidyl-Prolyl Cis-Trans Isomerase D; PPlase D; 40 kDa Peptidyl-Prolyl Cis-Trans Isomerase; Cyclophilin-40; CYP-40; Cyclophilin-Related Protein; Rotamase D; PPID; CYP40; CYPD

### **Background**

Peptidyl-Prolyl Cis-Trans Isomerase D (PPID) belongs to the cyclophilin-type PPlase family and PPlase D subfamily. PPID is widely expressed and it contains one PPlase cyclophilin-type domain and three TPR repeats. PPID catalyzes the cis-trans isomerization of proline imidic peptide bonds in oligopeptides and accelerates the folding of proteins. PPID can bind to the immunosuppressant cyclosporine A and is known that its overexpression suppresses the apoptosis in cancer cells.

### **Note**

For Research Use Only , Not for Diagnostic Use.