

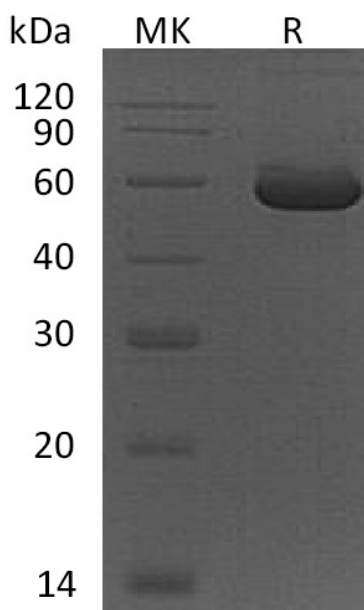
Product Name: Recombinant Human PEPD
Catalog #: PEH1301



Summary

Name	Peptidase D/PEPD/PRD
Purity	Greater than 95% as determined by reducing SDS-PAGE
Endotoxin level	<1 EU/μg as determined by LAL test.
Construction	Recombinant Human Peptidase D is produced by our E.coli expression system and the target gene encoding Ala2-Lys493 is expressed.
Accession #	AAH28295.1
Host	E.coli
Species	Human
Predicted Molecular Mass	54.5 KDa
Formulation	Supplied as a 0.2 μm filtered solution of 25 mM Tris-HCl, 100 mM Glycine, 10% Glycerol, pH 8.5.
Shipping	The product is shipped on dry ice/polar packs. Upon receipt, store it immediately at the temperature listed below.
Stability&Storage	Store at ≤-70°C, stable for 6 months after receipt. Store at ≤-70°C, stable for 3 months under sterile conditions after opening. Please minimize freeze-thaw cycles.
Reconstitution	

SDS-PAGE image



Product Name: Recombinant Human PEPD
Catalog #: PEH1301

Alternative Names

Xaa-Pro dipeptidase; Imidodipeptidase; PeptidaseD; Prolinedipeptidase; PRD; PEPD

Background

PEPD belongs to the peptidase M24B family of Eukaryotic-type prolidase subfamily. PEPD is a cytosolic dipeptidase that hydrolyzes dipeptides with proline or hydroxyproline at the carboxy terminus. It is important in collagen metabolism because of the high levels of imino acids. Defects in PEPD are a cause of prolidase deficiency which is an autosomal recessive disorder associated with iminodipeptiduria.

Note

For Research Use Only , Not for Diagnostic Use.