

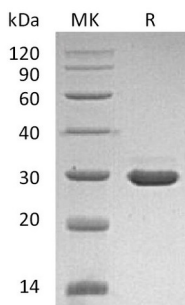
**Product Name: Recombinant Human pro-Beta NGF**  
**Catalog #: PEH1224**



## Summary

<b>Name</b>	pro-beta NGF
<b>Purity</b>	Greater than 95% as determined by reducing SDS-PAGE
<b>Endotoxin level</b>	<1 EU/μg as determined by LAL test.
<b>Construction</b>	Recombinant Human pro-Nerve Growth Factor is produced by our E.coli expression system and the target gene encoding Glu19-Ala241 is expressed.
<b>Accession #</b>	P01138
<b>Host</b>	E.coli
<b>Species</b>	Human
<b>Predicted Molecular Mass</b>	25 KDa
<b>Formulation</b>	Lyophilized from a 0.2 μm filtered solution of 20mM Histidine-HCl, 5% Sucrose, 0.02% Tween80, pH 5.0.
<b>Shipping</b>	The product is shipped at ambient temperature. Upon receipt, store it immediately at the temperature listed below.
<b>Stability&amp;Storage</b>	Lyophilized protein should be stored at ≤ -20°C, stable for one year after receipt. Reconstituted protein solution can be stored at 2-8°C for 2-7 days. Aliquots of reconstituted samples are stable at ≤ -20°C for 3 months.
<b>Reconstitution</b>	Always centrifuge tubes before opening. Do not mix by vortex or pipetting. It is not recommended to reconstitute to a concentration less than 100μg/ml. Dissolve the lyophilized protein in distilled water. Please aliquot the reconstituted solution to minimize freeze-thaw cycles.

## SDS-PAGE image



## Background

**Product Name: Recombinant Human pro-Beta NGF**  
**Catalog #: PEH1224**



---

**Alternative Names**

Beta-Nerve Growth Factor; Beta-NGF; NGF; NGFB;  $\beta$ -NGF; pro-Beta NGF

**Background**

The precursor form of the nerve growth factor (proNGF) like its mature form is characterized by the cystin knot motif consisting of three cystine bridges, whereas proneurotrophins and mature neurotrophins elicit opposite biological effects. ProNGF functions preferentially via the complex of pan-neurotrophin receptor p75 (p75NTR) and vps10p domain-containing receptor sortilin inducing neuronal apoptosis and contributing to age- and disease-related neurodegeneration.

**Note**

For Research Use Only , Not for Diagnostic Use.