

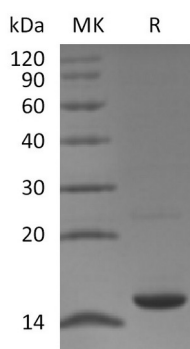
Product Name: Recombinant Human MAP1LC3A (C-6His)
Catalog #: PEH1133



Summary

Name	MAP1LC3A/Apg8p3
Purity	Greater than 95% as determined by reducing SDS-PAGE
Endotoxin level	<1 EU/μg as determined by LAL test.
Construction	Recombinant Human Microtubule-Associated Protein 1 Light Chain 3 Alpha is produced by our E.coli expression system and the target gene encoding Met1-Phe121 is expressed with a 6His tag at the C-terminus.
Accession #	Q9H492
Host	E.coli
Species	Human
Predicted Molecular Mass	15.3 KDa
Formulation	Supplied as a 0.2 μm filtered solution of 20mM Tris-HCl, 20% Glycerol, 100mM NaCl, pH 8.0.
Shipping	The product is shipped on dry ice/polar packs. Upon receipt, store it immediately at the temperature listed below.
Stability&Storage	Store at ≤-70°C, stable for 6 months after receipt. Store at ≤-70°C, stable for 3 months under sterile conditions after opening. Please minimize freeze-thaw cycles.
Reconstitution	

SDS-PAGE image



Background

Alternative Names	Microtubule-Associated Proteins 1A/1B Light Chain 3A; Autophagy-Related Protein LC3 A; Autophagy-Related Ubiquitin-Like Modifier LC3 A; MAP1 Light Chain 3-Like Protein 1; MAP1A/MAP1B Light Chain 3 A; MAP1A/MAP1B LC3 A; Microtubule-
--------------------------	---

Product Name: Recombinant Human MAP1LC3A (C-6His)
Catalog #: PEH1133

Background

Associated Protein 1 Light Chain 3 Alpha; MAP1LC3A
Microtubule-Associated Proteins 1A/1B Light Chain 3A (MAP1LC3A) belongs to the MAP1 LC3 family. MAP1LC3A is found most abundantly in the heart, brain, liver, skeletal muscle, and testis. But it is absent in the thymus and peripheral blood leukocytes. MAP1LC3A is thought to take part in the formation of autophagosomal vacuoles and is one of the light chain subunits that functions together with both MAP1A and/or MAP1B. In addition, MAP1A has an important part in neuronal development and in maintaining the balance between neuronal plasticity and rigidity.

Note

For Research Use Only , Not for Diagnostic Use.