

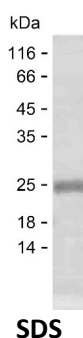
Product Name: Recombinant Human KDM6B Protein
Catalog #: PEH10839



Summary

Name	KDM6B_HUMAN
Purity	Greater than 85% as determined by reducing SDS-PAGE
Endotoxin level	Please contact with the lab for this information
Tag	C-His
Accession #	O15054
Host	E.coli
Species	Human
Molecular Mass	15 kDa
Buffer	Phosphate buffered saline
Shipping	The product is shipped on dry ice/polar packs. Upon receipt, store it immediately at the temperature listed below.
Stability&Storage	Store at $\leq -70^{\circ}\text{C}$, stable for 12 months after receipt. Store at $\leq -70^{\circ}\text{C}$, stable for 3 months under sterile conditions after opening. Please minimize freeze-thaw cycles.
Sequence	SATDPADPVD TAEPADSGTE RLLPPAQAKE EAGGVAAVSG SCKRRQKEHQ KEHRRHRRAC KDSVGRPRE GRAKAKAKVP KEKSRRVLGN LDLQSEIIQG REKSRPDLGG ASKAKPPTAP APPSAPAPSA

image



Background

Alternative Names	Lysine-specific demethylase 6B (EC 1.14.11.68) (JmjC domain-containing protein 3) (Jumonji domain-containing protein 3) (Lysine demethylase 6B) ([histone H3]-trimethyl-L-lysine(27) demethylase 6B)
--------------------------	--

Note

For Research Use Only , Not for Diagnostic Use

Product Name: Recombinant Human KDM6B Protein
Catalog #: PEH10839

