

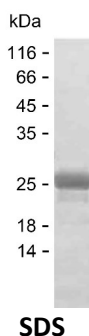
Product Name: Recombinant Human MCM2 Protein
Catalog #: PEH10824



Summary

Name	MCM2_HUMAN
Purity	Greater than 85% as determined by reducing SDS-PAGE
Endotoxin level	Please contact with the lab for this information
Tag	C-His
Accession #	P49736
Host	E.coli
Species	Human
Molecular Mass	19 kDa
Buffer	Phosphate buffered saline
Shipping	The product is shipped on dry ice/polar packs. Upon receipt, store it immediately at the temperature listed below.
Stability&Storage	Store at $\leq -70^{\circ}\text{C}$, stable for 6 months after receipt. Store at $\leq -70^{\circ}\text{C}$, stable for 3 months under sterile conditions after opening. Please minimize freeze-thaw cycles.
Sequence	DVEELTASQR EAAERAMRQR DREAGRGLGR MRRGLLYDSD EEDEERPARK RRQVERATED GEEDEEMIES IENLEDLKGH SVREWVSMAG PRLEIHHRFK NFLRTHVDSH GHNVFKERIS DMCKENRESL VVNYEDLAAR

image



Background

Alternative Names DNA replication licensing factor MCM2 (EC 3.6.4.12) (Minichromosome maintenance protein 2 homolog) (Nuclear protein BM28)

Note

For Research Use Only , Not for Diagnostic Use