

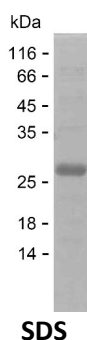
Product Name: Recombinant Human EED Protein
Catalog #: PEH10821



Summary

Name	EED_HUMAN
Purity	Greater than 85% as determined by reducing SDS-PAGE
Endotoxin level	Please contact with the lab for this information
Tag	C-His
Accession #	O75530
Host	E.coli
Species	Human
Molecular Mass	17 kDa
Buffer	Phosphate buffered saline
Shipping	The product is shipped on dry ice/polar packs. Upon receipt, store it immediately at the temperature listed below.
Stability&Storage	Store at $\leq -70^{\circ}\text{C}$, stable for 12 months after receipt. Store at $\leq -70^{\circ}\text{C}$, stable for 3 months under sterile conditions after opening. Please minimize freeze-thaw cycles.
Sequence	AGTDMPAACK QKLSSDENSN PDLSGDENDD AVSIESGTNT ERPDTPTNTP NAPGRKSWGK GKWKSKCKY SFKCVNSLKE DHNQPLFGVQ FNWHSKEGDP LVFATVGSNR VTLYECHSQG EIRLLQSYVD ADADENFYTC

image



Background

Alternative Names Polycomb protein EED (hEED) (Embryonic ectoderm development protein) (WD protein associating with integrin cytoplasmic tails 1) (WAIT-1)

Note

For Research Use Only , Not for Diagnostic Use