

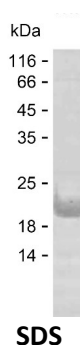
Product Name: Recombinant Human MRPL12 Protein
Catalog #: PEH10746



Summary

Name	RM12_HUMAN
Purity	Greater than 85% as determined by reducing SDS-PAGE
Endotoxin level	Please contact with the lab for this information
Tag	C-His
Accession #	P52815
Host	E.coli
Species	Human
Molecular Mass	17 kDa
Buffer	Phosphate buffered saline
Shipping	The product is shipped on dry ice/polar packs. Upon receipt, store it immediately at the temperature listed below.
Stability&Storage	Store at $\leq -70^{\circ}\text{C}$, stable for 6 months after receipt. Store at $\leq -70^{\circ}\text{C}$, stable for 3 months under sterile conditions after opening. Please minimize freeze-thaw cycles.
Sequence	APLDNAPKEY PPKIQQLVQD IASLTLEIS DLNELLKCTL KIQDVGLVPM GGVMSGAVPA AAAQEAVEED IPIAKERTHF TVRLTEAKPV DKVKLIKEIK NYIQGINLVQ AKKLVESLPQ EIKANVAKAE AEKIKAALEA

image



Background

Alternative Names	39S ribosomal protein L12, mitochondrial (L12mt) (MRP-L12) (5c5-2) (Mitochondrial large ribosomal subunit protein bL12m)
--------------------------	--

Note

For Research Use Only , Not for Diagnostic Use