

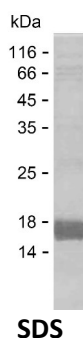
Product Name: Recombinant Human RPL30 Protein
Catalog #: PEH10702



Summary

Name	RL30_HUMAN
Purity	Greater than 85% as determined by reducing SDS-PAGE
Endotoxin level	Please contact with the lab for this information
Tag	C-His
Accession #	P62888
Host	E.coli
Species	Human
Molecular Mass	14 kDa
Buffer	Phosphate buffered saline
Shipping	The product is shipped on dry ice/polar packs. Upon receipt, store it immediately at the temperature listed below.
Stability&Storage	Store at $\leq -70^{\circ}\text{C}$, stable for 6 months after receipt. Store at $\leq -70^{\circ}\text{C}$, stable for 3 months under sterile conditions after opening. Please minimize freeze-thaw cycles.
Sequence	MVAAKKTKKS LESINSRLQL VMKSGKYVLG YKQTLKMIRQ GKAKLVILAN NCPALRKSEI EYYAMLAKTG VHHYSGNNIE LGTACGKYR VCTLAIDPG DSDIIRSMPE QTGEK

image



Background

Alternative Names 60S ribosomal protein L30 (Large ribosomal subunit protein eL30)

Note

For Research Use Only , Not for Diagnostic Use