

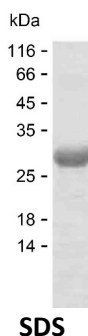
Product Name: Recombinant Human KLF6 Protein
Catalog #: PEH10689



Summary

Name	KLF6_HUMAN
Purity	Greater than 85% as determined by reducing SDS-PAGE
Endotoxin level	Please contact with the lab for this information
Tag	C-His
Accession #	Q99612
Host	E.coli
Species	Human
Molecular Mass	20 kDa
Buffer	Phosphate buffered saline
Shipping	The product is shipped on dry ice/polar packs. Upon receipt, store it immediately at the temperature listed below.
Stability&Storage	Store at $\leq -70^{\circ}\text{C}$, stable for 6 months after receipt. Store at $\leq -70^{\circ}\text{C}$, stable for 3 months under sterile conditions after opening. Please minimize freeze-thaw cycles.
Sequence	EDLWTKIILA REKKEESELK ISSPPEDTL ISPSFCYNLE TNSLNSDVSS ESSDSSEELS PTAKFTSDPI GEVLVSSGKL SSSVTSTPPS SPELSREPSQ LWGCVPGELP SPGKVRSGTS GKPGDKGNGD ASPDGRRRVH RCHFNGCRKV YTKSSHLKAH

image



Background

Alternative Names	Krueppel-like factor 6 (B-cell-derived protein 1) (Core promoter element-binding protein) (GC-rich sites-binding factor GBF) (Proto-oncogene BCD1) (Suppressor of tumorigenicity 12 protein) (Transcription factor Zf9)
--------------------------	---

Note

For Research Use Only , Not for Diagnostic Use

Product Name: Recombinant Human KLF6 Protein
Catalog #: PEH10689

