

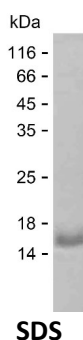
Product Name: Recombinant Human CLTCL1 Protein
Catalog #: PEH10637



Summary

Name	CLH2_HUMAN
Purity	Greater than 85% as determined by reducing SDS-PAGE
Endotoxin level	Please contact with the lab for this information
Tag	C-His
Accession #	P53675
Host	E.coli
Species	Human
Molecular Mass	15 kDa
Buffer	Phosphate buffered saline
Shipping	The product is shipped on dry ice/polar packs. Upon receipt, store it immediately at the temperature listed below.
Stability&Storage	Store at $\leq -70^{\circ}\text{C}$, stable for 12 months after receipt. Store at $\leq -70^{\circ}\text{C}$, stable for 3 months under sterile conditions after opening. Please minimize freeze-thaw cycles.
Sequence	DHLYKDAMQH AAESRDAELA QKLLQWFLEE GKRECFAACL FTCYDLLRPD MVLELAWRHN LVDLAMPYFI QVMREYLSKV DKLDALESLR KQEEHVTEPA PLVFDFDGHE

image



Background

Alternative Names Clathrin heavy chain 2 (Clathrin heavy chain on chromosome 22) (CLH-22)

Note

For Research Use Only , Not for Diagnostic Use