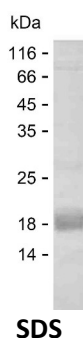


Summary

Name	FCRLA_HUMAN
Purity	Greater than 85% as determined by reducing SDS-PAGE
Endotoxin level	Please contact with the lab for this information
Tag	C-His
Accession #	Q7L513
Host	E.coli
Species	Human
Molecular Mass	11 kDa
Buffer	Phosphate buffered saline
Shipping	The product is shipped on dry ice/polar packs.Upon receipt, store it immediately at the temperature listed below.
Stability&Storage	Store at $\leq -70^{\circ}\text{C}$, stable for 12 months after receipt.Store at $\leq -70^{\circ}\text{C}$, stable for 3 months under sterile conditions after opening. Please minimize freeze-thaw cycles.
Sequence	TLNPAPQKSA APGTAPEEAP GPLPPPPTPS SEDPGFSSPL GMPDPHLYHQ MGLLLKHMVD VRVLLGHLLM ELRELSGHRK

image



Background

Alternative Names	Fc receptor-like A (Fc receptor homolog expressed in B-cells) (Fc receptor-like and mucin-like protein 1) (Fc receptor-like protein) (Fc receptor-related protein X) (FcRX)
--------------------------	---

Note

For Research Use Only , Not for Diagnostic Use